



P—808

808NM DIODE LASER HAIR REMOVAL SYSTEM

Content

- **P-808 perspective**
- **Theory**
- **Operator interface**
- **Technical Advantages**
- **System Applications**
- **Specifications**
- **System advantages**

P-808 perspective



Super cooling

Sapphire Cooling 0-(-10°C)

Professional

Micro-channel technology

High-tech

German design

Large coverage

12*12nm or 12*23mm spot

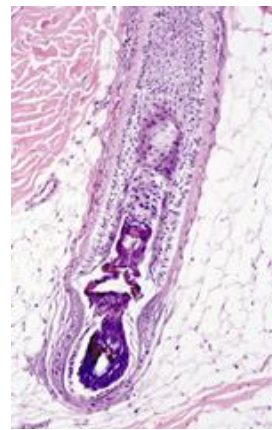


HANDPIECE

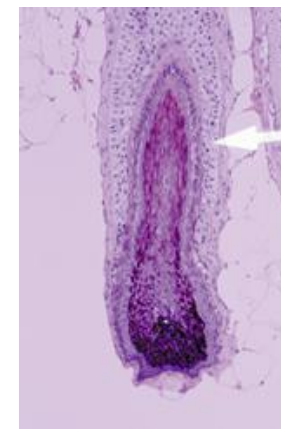
- Modern Design
- Stable output
- Short irradiation time
- Easy to control
- Excellent, permanent,
- Clinical effects
- High security

Theory

- The P-808 System uses special lasers with a long Pulse-Width of 808nm to penetrate through the hair follicle .
- Using selective light absorption, the laser can be preferentially absorbed by heating the hair shaft and hair follicle. This effectively destroys the hair follicle and cuts off oxygen flow around hair follicle.
- When the laser engages, the system uses special technology to cool and protect the skin from damage, for a very safe and comfortable treatment.



Normal Hair Follicle



Hair Follicle Immediately After Treatment

Golden yellow: the light of confidence, healthy skin.

Turquoise blue: pure, clear, energetic.

Black: mystic, majestic, full of attraction.

Pink: gentle, romantic, filled with illusion.

Gray: independent, undertone, symbol of mature.

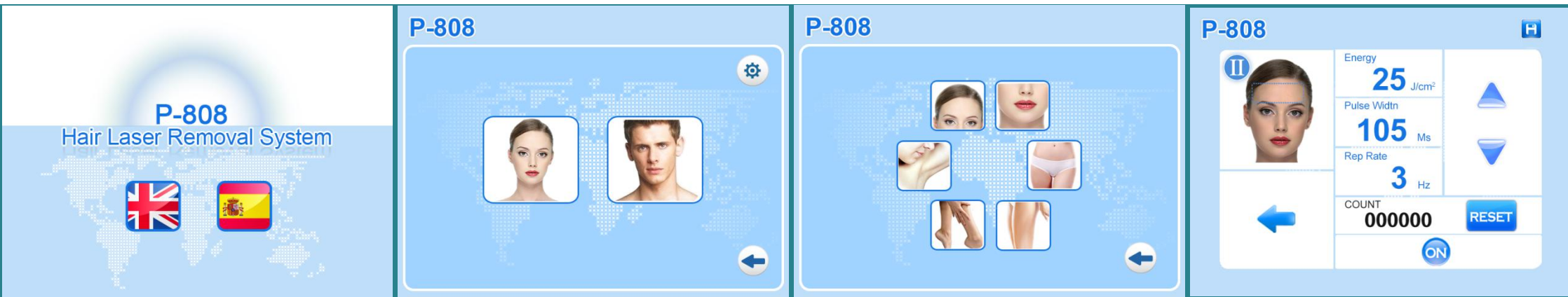


P-808

808nm Diode Laser Hair Removal System



Operator interface



1. Main operation is by touch-screen display.
2. The blue and white colored interface is concise, readable and practical.
3. The operator interface is designed to economically accommodate both male and female users.
4. Through the touch screen, you can control shutdown, laser parameter settings, and laser use settings.
5. Only parameter settings, mode switching, refrigerator opening and shutdown can be performed during standby mode.

Specifications

Name:	808nm Diode Laser Hair Removal System
Laser Generator Power:	800W
Machine Type:	P-808
Laser Type:	Semi-conductor laser
Laser wavelength:	808nm
Sapphire size:	12*23mm (12*12mm is also available)
Energy Density:	10~120j/cm² (continuous adjustable)
Pulse width:	20~1200ms (continuous adjustable)
Repetition frequency:	1~10HZ
Cooling way:	Sealed inner-circle water cooling system
Treatment head temperature	-10~0°C
Power rating:	2000w
Power supply:	AC220V ± 10%,50Hz,10A
Security Classification:	Class I 、 type BF
Weight:	45 kg
External dimensions:	36*54*94cm (length*width*height)

Technical Advantages



- **High Energy Output: Effective for any coloring -----120J**
- **Long Pulse Width: Ensures heated hair follicles, lasting hair removal -----1200ms**
- **Big Spot Size: Fast, Effective Results ----- 12*23mm or 12*12mm**
- **Strong Skin Cooling: Instant, safe, comfortable ----- -10°C**
- **Fast Speed: Slide treatment for safety and convenience -----10Hz**

System Applications

- **Treats all hair colors from black hair to white hair**
- **Treats all skin types from white to the darkest skin**
- **No pain; short treatment sessions**
- **Effective, safe treatment for permanent hair removal**



System Advantages

The Diode Laser Hair Removal Machine emits an 808nm laser which is absorbed easily by the hair follicle pigment, without damaging the normal surrounding epidermis. The light energy is absorbed by the pigment in the hair shaft and follicle, then transformed to heat energy. It thereby raises the follicle temperature until the follicle structure is destroyed. It is then removed by natural physical processes, thus achieving permanent hair removal.

"Safety" "Efficient" "Pain free" "Convenient"

"Permanent Hair Removal"



1. The optimum laser wavelength

The 808nm near-infrared laser of the P-808 Hair Removal System is optimal for absorbing melanin because it effects different parts and hair follicles, to remove any hair effectively. From the diagram, we can see 808nm is best for absorbing melanin without absorbing other molecules.

2. Long laser pulse width

The laser pulse duration is adjustable from 10ms to 1200ms for specialized, effective, long-lasting treatments!



3. No pigmentation used for any skin type

P-808 hair removal system uses penetrate technology and skin absorbs fewer lasers and no pigmentation.

4. Pure Sapphire contact cooling system ensures safe treatment

The P-808's Pure Sapphire contact cooling system safely allows maximum energy output. As reported, pressure can increase the effect of light by 30%-40%.



5. Large spot size speeds up treatment

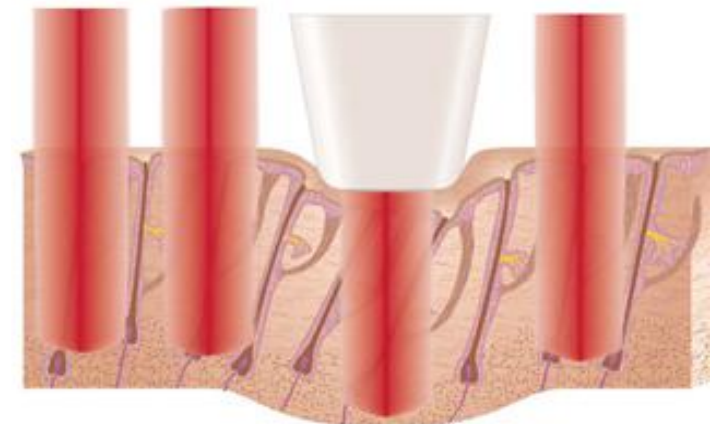
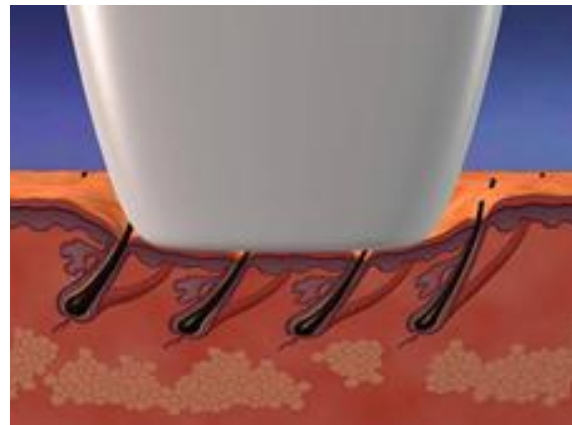
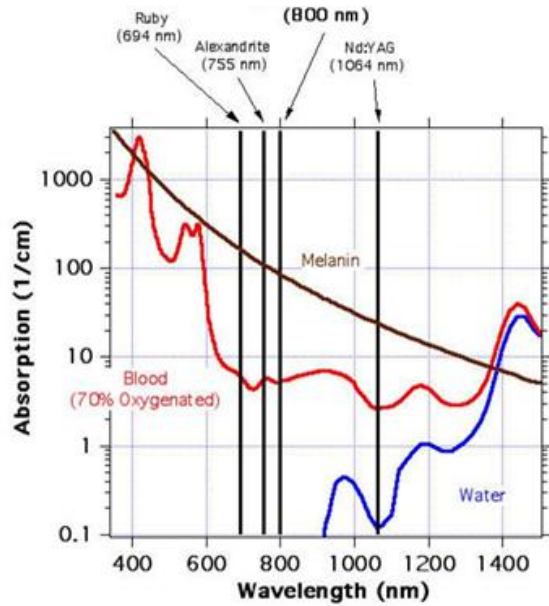
P-808 uses a large 12*23mm treatment area to ensure prompt, efficient hair removal. Repeat treatments are unnecessary.

6. A super-large true color touch-screen makes for easy operation

On the 12-inch multi-color touch screen, you can choose man or woman, skin color, and treatment areas. Very easy to operate!

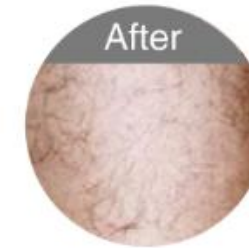


7. The power module design is suitable for import and export business, and convenient to maintain.



694 755 **808** 1064

Before & After Treatment



SANHE



Beijing Sanhe Beauty S & T Co., Ltd

Web: www.sanhebeauty.com Email: sanhepenny@163.com

Address: 2nd Floor, Building No.7, Maohua Industrial Park, Shunyi District, Beijing, China

Tel: +86-18137371286 WhatsApp: 008618137371286