

# 2014 Collection

---

## ◆ PREMIUM



**ALYA 3646**  
2/3/4m  
100 cm x 100 cm



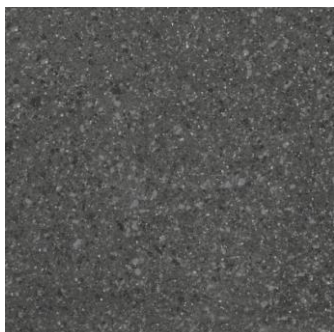
**ALYA 6046**  
2/3/4m  
100 cm x 100 cm



**ALYA 7246**  
2/3/4m  
100 cm x 100 cm



**ALYA 8046**  
2/3/4m  
100 cm x 100 cm



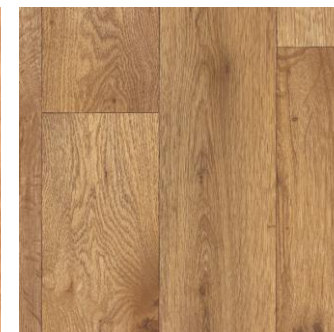
**ALYA 8146**  
2/3/4m  
100 cm x 100 cm



**FALCO 3959**  
2/3/4m  
100 cm x 100 cm



**FALCO 1759**  
2/3/4m  
100 cm x 100 cm



**CAMEO 1000**  
2/3/4m  
100 cm x 100 cm



**MARRON 1240**  
2/3/4m  
100 cm x 100 cm



**BARON 1127**  
2/3/4m  
100 cm x 100 cm

# 2014 Collection

## ◆ PREMIUM



## ◆ Product Information

	Norm	Symbol	
Usage classification	EN 685		23 – 34 - 43
Wear layer	EN 429		0,70 mm
Total thickness	EN 428		2,00 mm
Standard width	EN 430		2540 gr/m <sup>2</sup>
Standard length	EN 426		15 - 26 m

## ◆ Technical Information

	Norm	Symbol	
Light stability	EN ISO 105 B02		≥ 6 - 7
Dimensional Stability	EN 434		≤ 0,40 %
Underfloor heating	ISO 8302		Suitable
Residual Indentation	EN 433		≤ 0,10 mm
Impact Sound Insulation	EN ISO 140-8		6 dB
Castor Chair	EN 425		Suitable
Reaction to fire	EN 13501-1		B <sub>fl</sub> /S1
Slip resistance	DIN 51130		R10