

Luigi Gratton

Vice President, Education
Nutrition Advisory Board

*Powerful Products =
Powerful Nutrition*

 HERBALIFE
EXTRAVAGANZA
ATLANTA • GEORGIA • 2009



What does the *Human Body* need?

 HERBALIFE
EXTRAVAGANZA
ATLANTA • GEORGIA • 2009



Protein to help
build and maintain
lean muscle mass

Natural Plant Nutrients
to balance oxidant stress
and inflammation inside
the cells

Vitamins & minerals
for growth and
development

Carbs provide the
body's main source
of energy

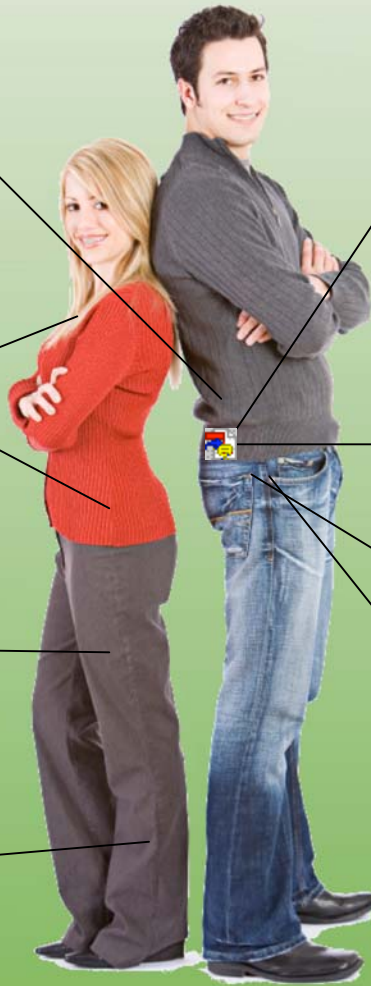
Unsaturated fats
to achieve and
maintain a
healthy heart

Omega 3 fatty acids for
healthy heart, brain and
healthy function of
eyes, skin, joints, hair
and immune system

Fiber to support
the body's natural
elimination of
waste and toxins

Water for hydration

**Exercise &
relaxation** for a
healthy heart



What happens if we don't get the *Right Amounts?*

 HERBALIFE
EXTRAVAGANZA
ATLANTA • GEORGIA • 2009



Imbalanced Nutrition

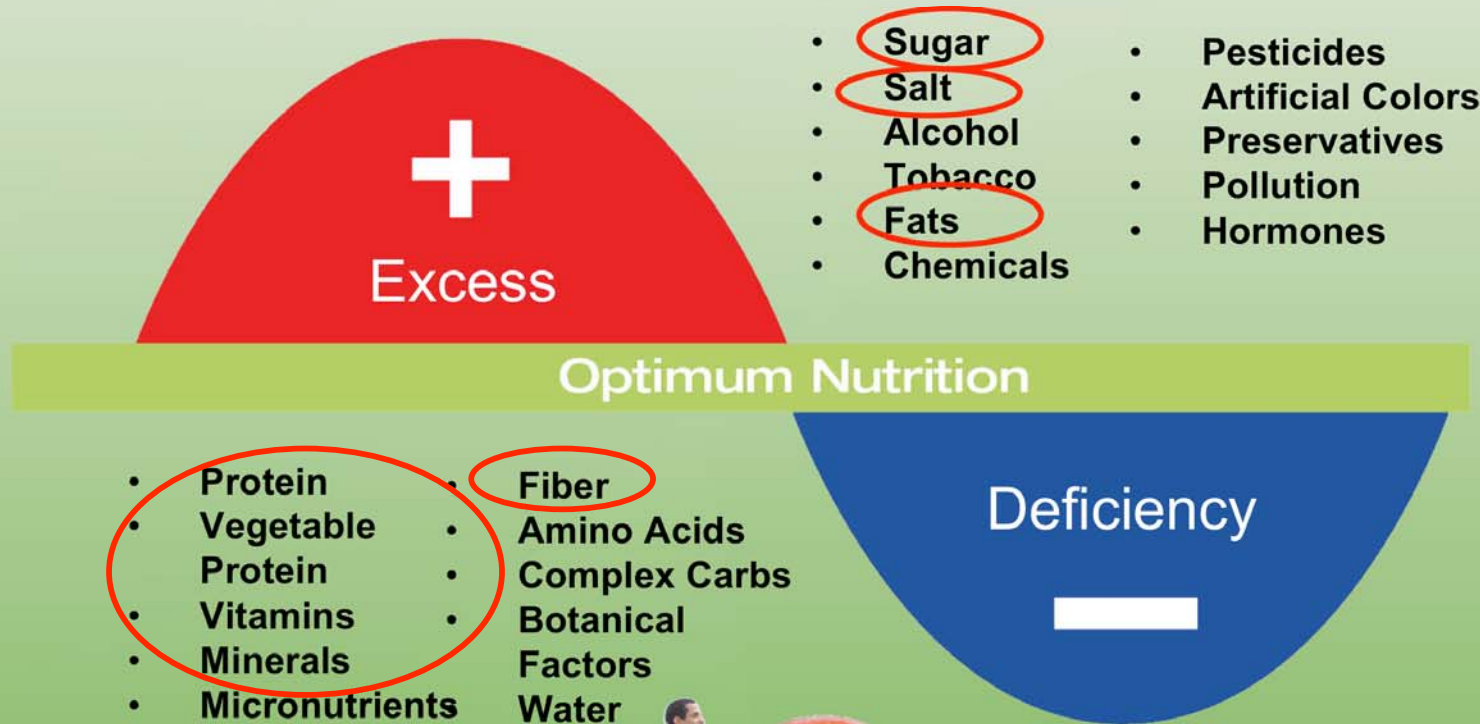


*You're getting nutrients –
but in the wrong proportions*

 HERBALIFE
EXTRAVAGANZA
ATLANTA • GEORGIA • 2009



This is Balanced Nutrition



Excess Calories = Weight Management Problems









HERBALIFE

*Provides Solutions for
Balanced Nutrition*

 HERBALIFE
EXTRAVAGANZA
ATLANTA • GEORGIA • 2009



The Herbalife® Solution



Cellular Nutrition provides balanced nutrition to cover your body's needs



Other products provide personalized nutrition solutions as part of a healthy, active lifestyle

HERBALIFE
EXTRAVAGANZA
ATLANTA • GEORGIA • 2009



Formula 1 Shake: Healthy Breakfast/Meal in a Glass

- Calorie control: less than 220 calories per glass
- Balanced combination of soy protein and plant-based carbohydrates
- At least 25g of soy protein a day as part of a diet low in saturated fat can help you maintain healthy blood cholesterol levels
- Balanced levels of essential vitamins and minerals
- Available in 7 delicious flavors



Formula 1 Shake Nutrients

- Glutamine
- Arginine
- Branched Chain Amino Acids
- Antioxidants
- Vitamins
- Minerals

 HERBALIFE
EXTRAVAGANZA
ATLANTA • GEORGIA • 2009



Shake Options

- Formula 1
- Formula 1 Instant
- Protein Drink Mix



Formula 2 Multivitamin Complex



- A daily multivitamin with over 20 essential nutrients and antioxidants, including folic acid, calcium, and iron.
- Promotes healthy bones, skin and hair.*

HERBALIFE
EXTRAVAGANZA
ATLANTA • GEORGIA • 2009



*These statements have not been evaluated by the Food and Drug Administration. This product is not intended to diagnose, treat, cure or prevent any disease.

Importance of Nutrient Absorption: Cell Activator



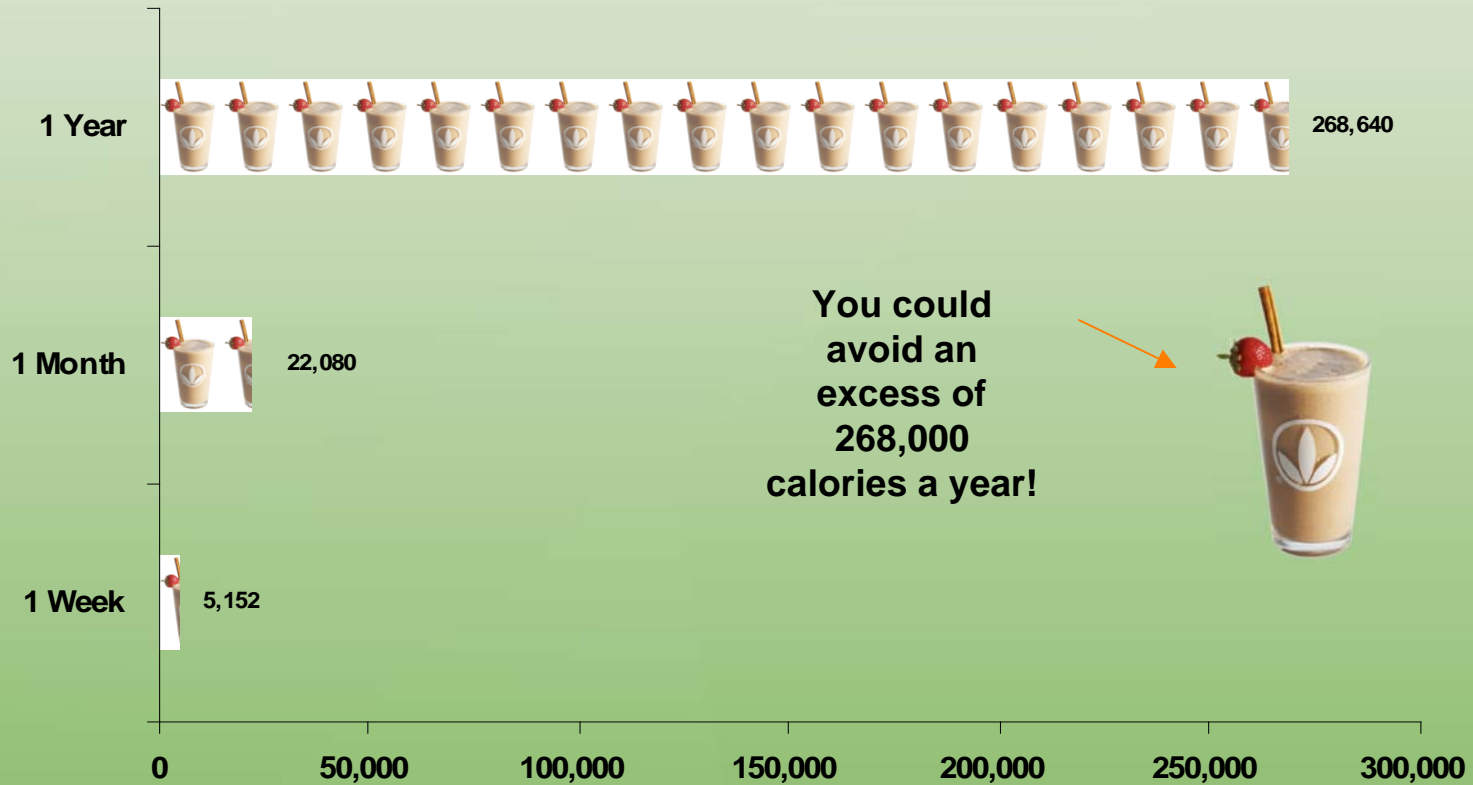
- A select blend of botanicals and essential nutrients to enhance nutrient absorption and support cellular energy production.*

 HERBALIFE
EXTRAVAGANZA
ATLANTA • GEORGIA • 2009



*These statements have not been evaluated by the Food and Drug Administration. This product is not intended to diagnose, treat, cure or prevent any disease.

Formula 1: Calorie Counter



The Price of Health

Hamburger Meal

(Hamburger, fries and a soda)

\$7.17



Calories: 1,270

Calories from fat: 49g

Formula 1 Healthy Meal Nutritional Shake

(1 serving of Formula 1, 8 oz. of nonfat milk and 1 oz. of strawberries)

\$1.78



Calories: 228

Calories from fat: 1g

Give your body what it needs!



Herbalife Cellular Nutrition

- Formula 1
- Formula 2
- Cell Activator

Soy Protein

Calorie
Control

Fiber



Vitamins

Plant Based Carbs

Healthy Fats

Minerals

 **HERBALIFE**
EXTRAVAGANZA
ATLANTA • GEORGIA • 2009



Protein Content: PPP/PDM vs. Chicken Thigh

Over 25% more
protein



2 servings

or



1 serving

VS.



1 serving

HERBALIFE
EXTRAVAGANZA
ATLANTA · GEORGIA · 2009



PROTEIN SNACKS

- Protein Bars Deluxe
- Protein Drink Mix
- Protein Beverage Mix
- Soup Mix
- Protein Bars

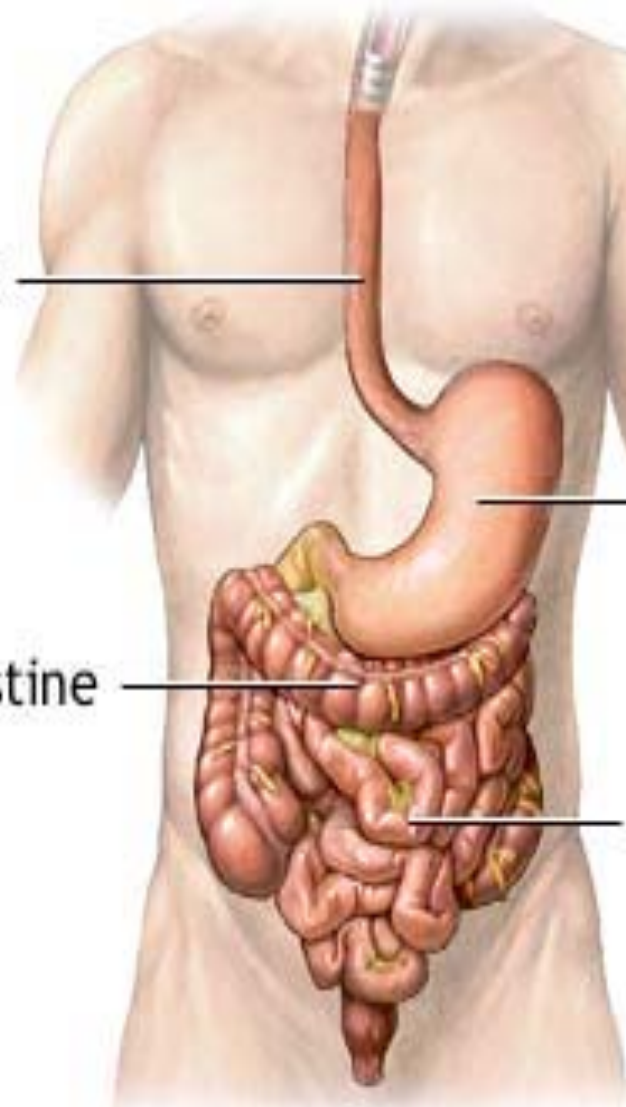


Esophagus

Stomach

Large intestine

Small intestine





Good = Nutrients



 HERBALIFE
EXTRAVAGANZA
ATLANTA • GEORGIA • 2009

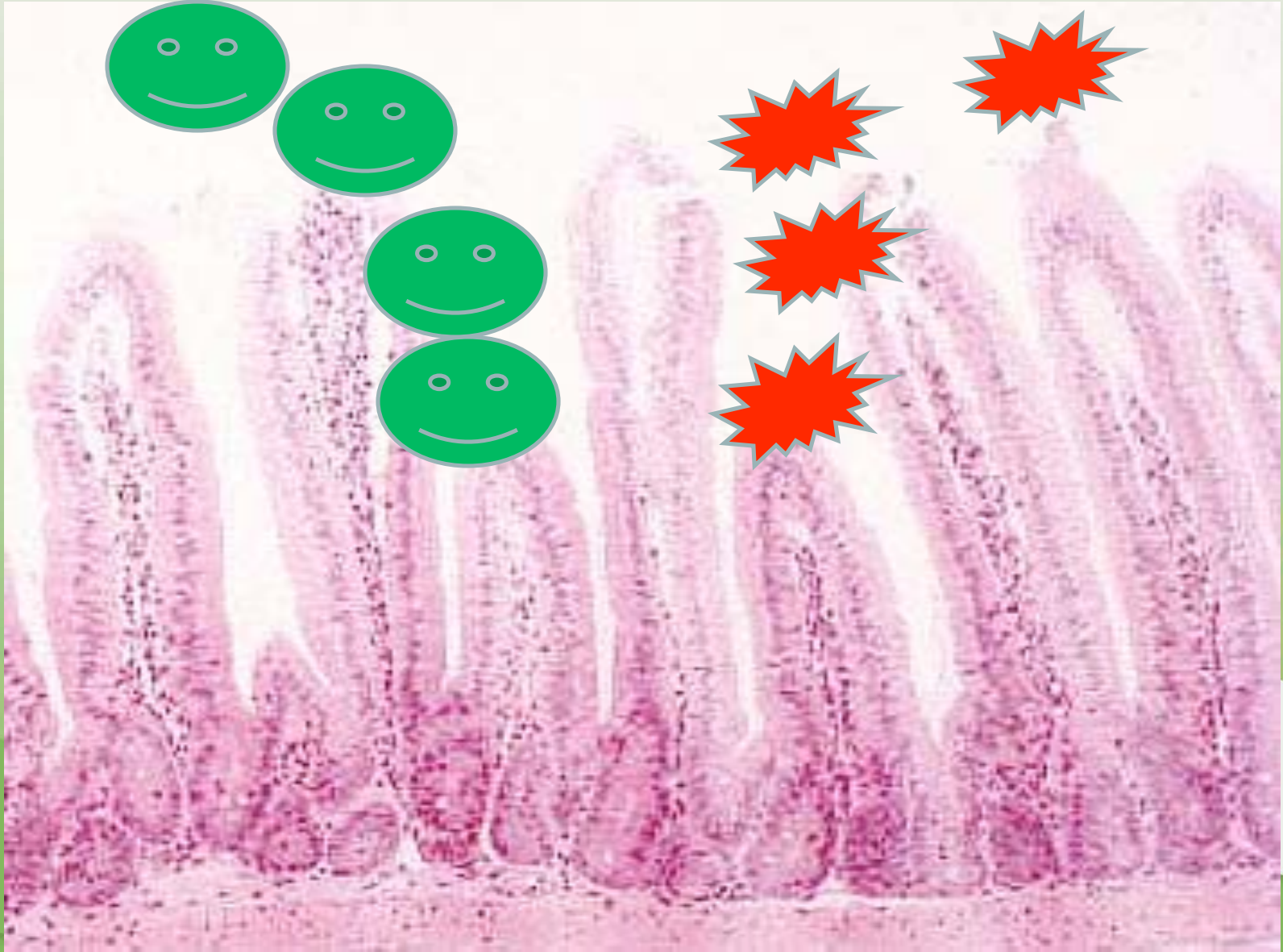


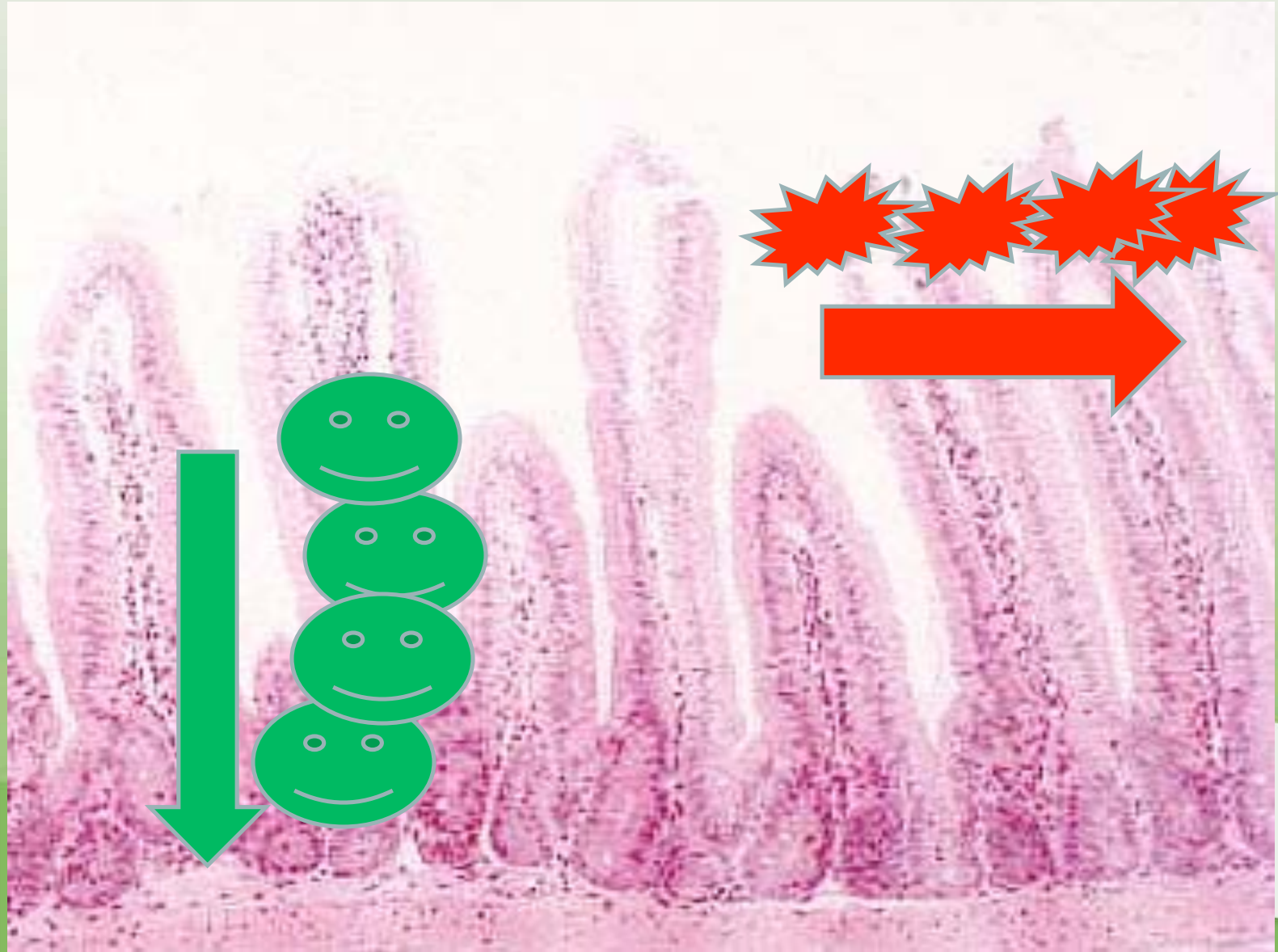
Bad = Toxins, Bad Bacteria



 HERBALIFE
EXTRAVAGANZA
ATLANTA • GEORGIA • 2009







Avoiding Weight Management Problems



Enhancers: Science Based Products

- **Aminogen®¹**
 - Helps break down proteins into amino acids, improving the absorption of these essential nutrients*
- **Thermobond®**
 - Helps reduce fat absorption and support weight management.*
- **Snack Defense®**
 - Helps support blood sugar level already within normal range.*
- **Total Control®**
 - Boosts Metabolism.*
 - Builds Energy and Alertness.*



*These statements have not been evaluated by the Food and Drug Administration. This product is not intended to diagnose, treat, cure or prevent any disease.

1 Aminogen® is a registered trademark of Triarco Industries and is protected by U.S. patent no. 5,387,422.

Calorie Count: Herbal Tea Concentrate vs. Can of Cola



Two servings

**12 times
fewer calories**

VS.

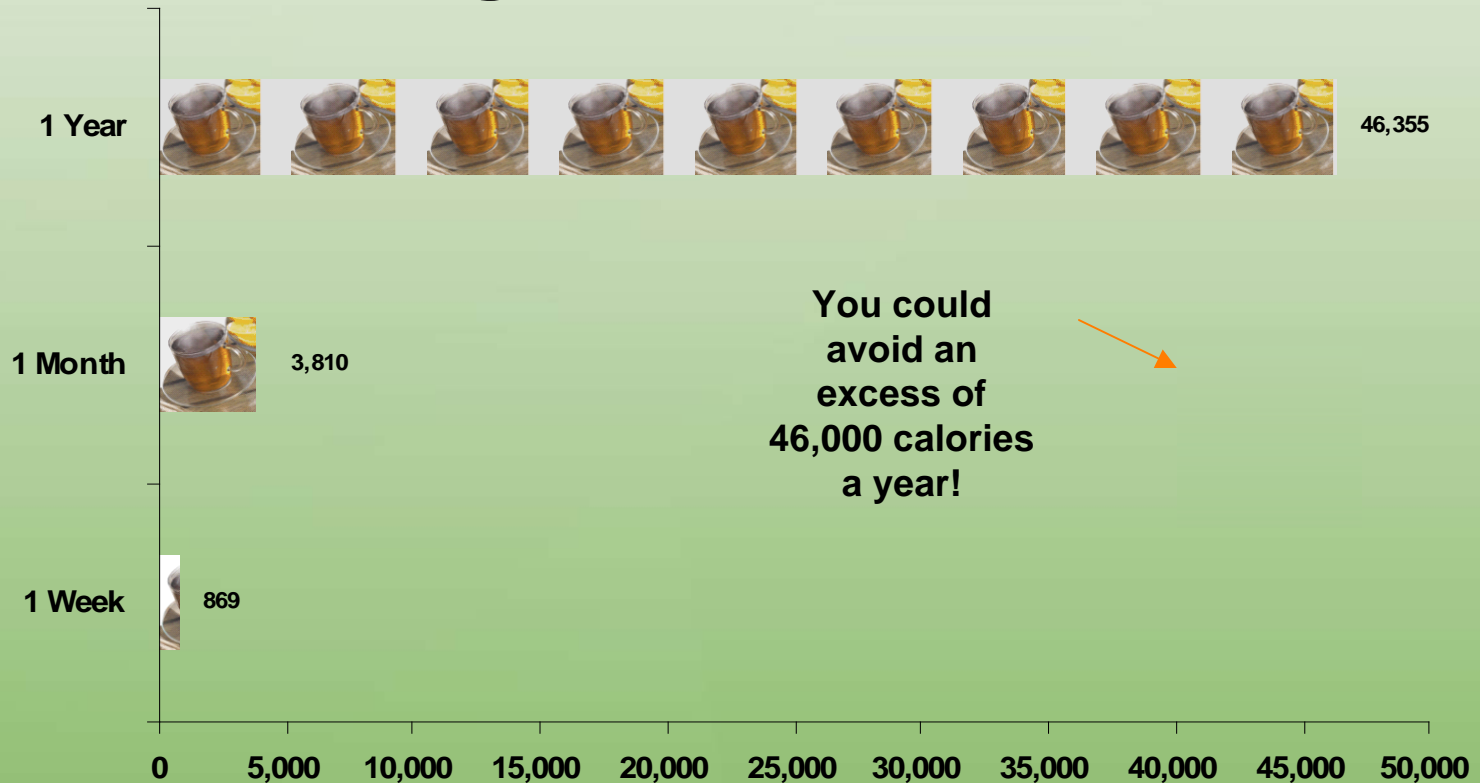


12oz can of cola

HERBALIFE
EXTRAVAGANZA
ATLANTA • GEORGIA • 2009



Mid-Morning Break: Calorie Counter



Calories Saved on Two Servings Herbal Tea vs. Can of Cola

Omega-3 Content: Herbalifeline vs. Tuna Fillet



***Recommended
daily serving***

**82% more
Omega-3
VS.**



One serving

**HERBALIFE
EXTRAVAGANZA
ATLANTA · GEORGIA · 2009**



Note: Fish portion is 3 ounces, raw weight. Depending on variety, contains a range of omega-3 fatty acids with an average of approximately 600 mg per 3 ounces.

Heart Health

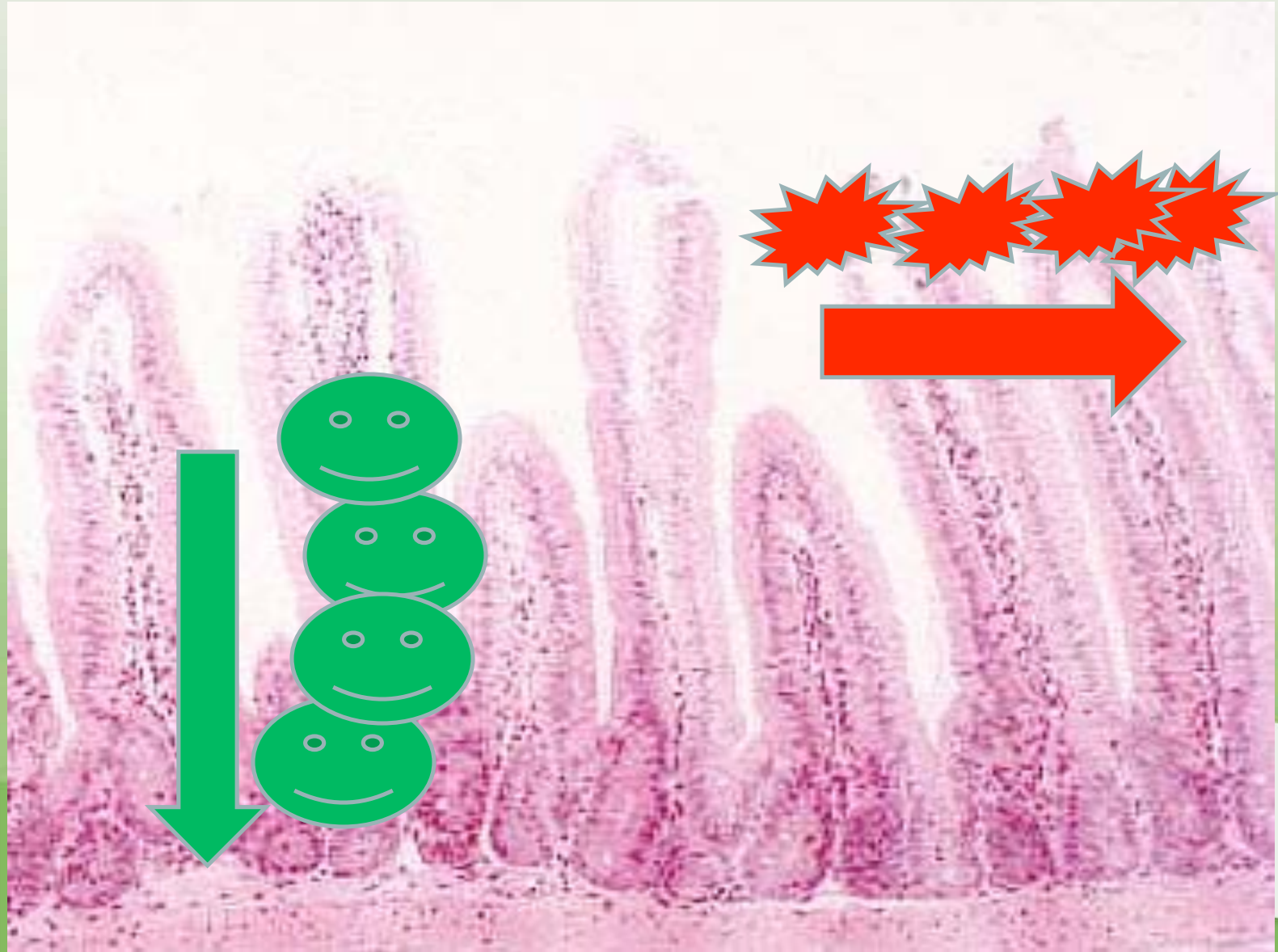


Targeted Health Solutions

- Digestive Health
 - Fiber
 - Herbal Aloe
- Immune Solutions
 - Best Defense[®]
 - Schizandra Plus
 - RoseOx[®]¹



¹ RoseOx[®] is registered trademark of Zuellig Botanicals, Inc.



Why the Cellular Nutrition Solution is Easier and Healthier

1. Calories

2. Nutrients

3. Protein

 HERBALIFE
EXTRAVAGANZA
ATLANTA • GEORGIA • 2009





THIS SOLUTION IS

EXCLUSIVELY

AVAILABLE THROUGH YOUR

**HERBALIFE
INDEPENDENT
DISTRIBUTOR**