

comfortable / practical & stylish
laboratory tested fabrics you can trust

Navy
Order Navy to co-ordinate with Sailor Navy workwear

Dark Navy
Order Dark Navy to co-ordinate with Navy workwear

Royal

Turquoise

Pale Blue

Bottle Green

Jade

Kelly Green

Aqua

Purple

Lilac

Burgundy

Red

Orange

Gold

Yellow

Cream

Black

White

leading fabric technology
(see below for details)

**Unisex Poloshirt
W231**

- 195gsm 65% Cotton/35% Polyester
- Short sleeved
- Ribbed collar & cuffs
- Three button front placket
- 40° wash
- Chest sizes:
S fits up to 81cm (32ins)
M fits up to 91.5cm (36ins)
L fits up to 101.5cm (40ins)
XL fits up to 112cm (44ins)
XXL fits up to 122cm (48ins)
XXXL fits up to 132cm (52ins)
XXXXL fits up to 142cm (56ins)
- Colours: as shown

leading fabric technology:
special plaited yarn - cotton
inside with increased
breathability and polyester
outside giving durability and
soil resistance

All items

195
gsm

COTTON
RICH

40°



Unisex

emblem service
see pages 2 - 3

W231
Kelly Green



W231
Turquoise

unisex casualwear

A collection of top quality, comfortable unisex casualwear offered in a vast selection of colours.

The unisex shirt range offers contemporary colours with co-ordinating shirts & blouses available on pages 40 - 45.

All casualwear fabrics are laboratory tested to rigorous quality standards to ensure they are fit-for-purpose and long lasting.

Discounts are available on large volume orders. Please call for details.

See also Value Leisurewear pages 108 - 119

For industrially launderable

poloshirts see page 245

For Size Charts see pages 282 - 283



- poloshirts 76 - 81
- baseball caps 79
- unisex shirts 82 - 89
- t-shirts & shorts 90 - 91
- sweatshirts & joggers 92 - 93
- casual trousers & belts 94
- fleecees 95 - 97
- outerwear 98 - 107

call 0845 155 2288 or visit www.alexandra.co.uk

easy care long lasting poloshirts
10 colours - aprons to co-ordinate

great value

All items
Unisex

PR21
Black
JO6
Black



G211
Royal
JO6
Royal



JO6
Red



JO6
Dark Navy
40°



JO6
Kelly Green



Unisex Poloshirt
JO6

- 180gsm 65% Polyester/35% Cotton
- Short sleeved
- Ribbed collar & cuffs
- Three button front placket
- 40° wash
- Chest sizes: S fits up to 89cm (35ins), M fits up to 94cm (37ins)
L fits up to 99cm (39ins), XL fits up to 104cm (41ins)
XXL fits up to 112cm (44ins), XXXL fits up to 119.5cm (47ins)

Colours: Dark Navy* / Royal / Pale Blue / Pale Grey / White / Black / Bottle Green / Kelly Green / Burgundy / Red

These colours, with the exception of Pale Grey, have been designed to match our workwear styles.

*Order Dark Navy to co-ordinate with Navy workwear.

Classic Baseball Cap
PR21

- 100% Cotton
 - Adjustable size
- Colours: Royal / Black / White / Bottle Green / Red

Contemporary Baseball Cap
G211

- 100% Cotton
 - Adjustable size
- Colours: Kelly Green / Royal / Yellow / Black / White / Navy / Bottle Green / Burgundy / Red

G211



Dark Navy*

Black

Royal

Bottle Green

Pale Blue

Kelly Green

Pale Grey

Burgundy

White

Red

For co-ordinating aprons see pages 142 - 143 / For industrially launderable poloshirts see page 245

top quality unisex poloshirts

contrast tipped details



2 colour tip

NLS
Navy /
White & Red

COTTON RICH

40°



1 colour tip

NL4
Navy / Kelly Green

COTTON RICH

40°

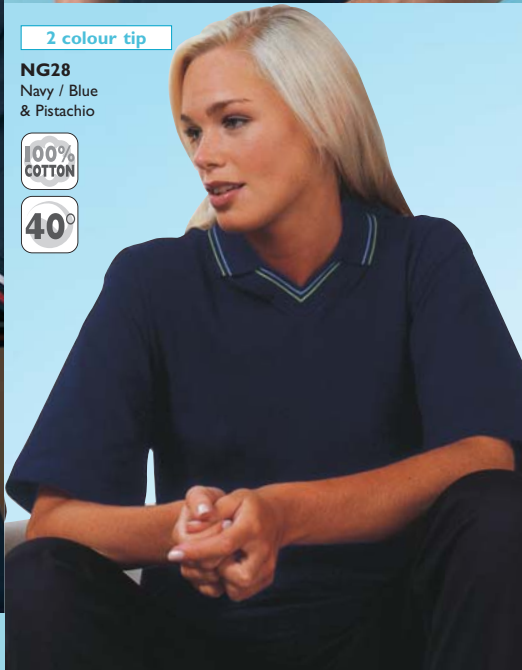


2 colour tip

NG28
Navy / Blue
& Pistachio

100% COTTON

40°



For details of adding your message / logo see pages 2 - 3

heavyweight long sleeved classic

CL62
Navy



CL62
Burgundy

100% COTTON

40°



Unisex Poloshirt NLS

- 200gsm 65% Cotton/35% Polyester
- Short sleeved
- Ribbed collar & cuffs
- Three button front placket
- 40° wash
- Chest sizes:
S fits up to 81cm (32ins)
M fits up to 91.5cm (36ins)
L fits up to 101.5cm (40ins)
XL fits up to 112cm (44ins)

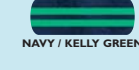
Colours: Black with red & grey trim /
Bottle Green with burgundy & navy
trim / White with burgundy & navy
trim / Burgundy with white & navy
trim / Navy with white & red trim



Unisex Poloshirt NL4

- 200gsm 65% Cotton/35% Polyester
- Short sleeved
- Ribbed collar & cuffs
- Three button front placket
- 40° wash
- Chest sizes:
S fits up to 81cm (32ins)
M fits up to 91.5cm (36ins)
L fits up to 101.5cm (40ins)
XL fits up to 112cm (44ins)

Colours: Red with navy trim /
Navy with kelly green trim



Unisex Collared T-shirt CL62

- 230gsm 100% Cotton
- Short sleeved
- Ribbed collar & cuffs
- V-neck
- 40° wash
- Chest sizes:
S fits up to 91.5cm (36ins)
M fits up to 101.5cm (40ins)
L fits up to 112cm (44ins)
XL fits up to 122cm (48ins)

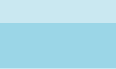
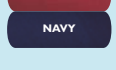
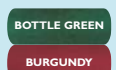
Colours: Black with terracotta &
biscuit / Navy with blue & pistachio



Unisex Poloshirt CL62

- 220gsm 100% Cotton
- Long sleeved
- Ribbed collar & cuffs
- Two button front placket
- 40° wash
- Chest sizes:
S fits up to 86.5cm (34ins)
M fits up to 96.5cm (38ins)
L fits up to 106.5cm (42ins)
XL fits up to 117cm (46ins)

Colours: Bottle Green /
Burgundy / Navy



For industrially launderable poloshirts see page 245

quality colour wovens & plains
striking black & white co-ordination

All items
40°
Unisex

NG68
Black & White

COTTON RICH



See page 84 for royal & white option

HT2
Black



great value



HT2
White

Unisex Shirt
NG68

- Colour woven
 - 100gsm 60% Cotton/40% Polyester
 - Short sleeved
 - Breast pocket with pen division
 - Button down collar
 - 40° wash
 - Sizes: XS - XXL
- Colours:** Royal & White check / Black & White check

Unisex Grandad Shirt
HT2

- 100gsm 65% Polyester/35% Cotton
 - Long sleeved
 - Breast pocket
 - 40° wash
 - Sizes: S - XL
- Colours:** Black / White

Unisex Shirt
NU961

NEW

- 100gsm 55% Cotton/45% Polyester
 - Short sleeved
 - Breast pocket with pen division
 - 40° wash
 - Sizes: XS - XXL
- Colour:** Black

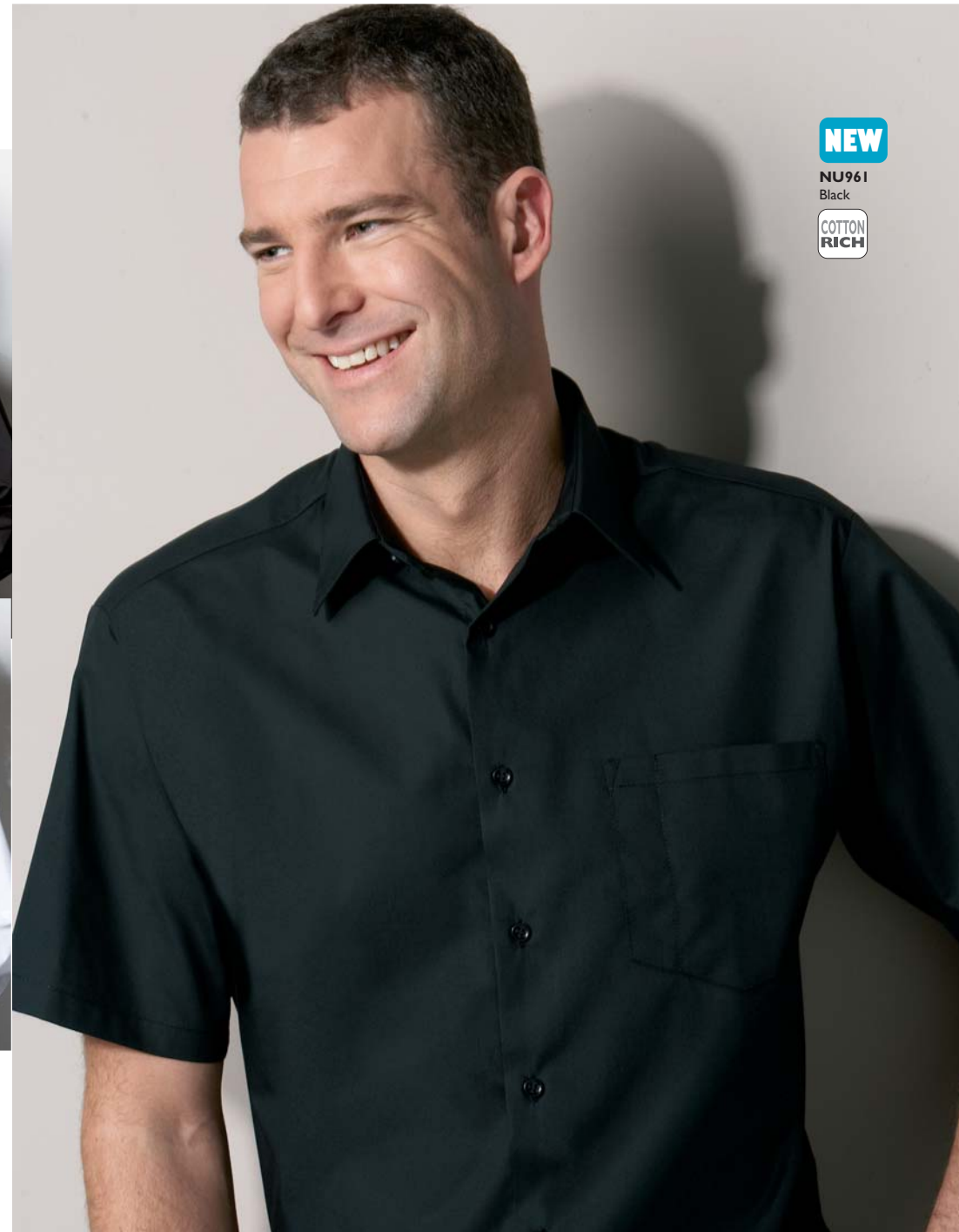
For casual trousers
see pages 94 & 243
and 248 - 249

For co-ordinating
aprons see page 145

NEW

NU961
Black

COTTON RICH



See page 39 for new co-ordinating 3/4 sleeve blouse

checked & plain co-ordinates
durable & comfortable

NEW

NU960
Navy Check



NG68
Royal &
White



See page 82 for black & white option

Unisex Shirt
NU960

NEW

- 145gsm 67% Polyester/33% Cotton
- Short sleeved
- Breast pocket with pen division
- 60° wash
- Sizes: XS - XXL

Colours: Navy Check / Blue Check



NAVY CHECK

BLUE CHECK

Unisex Shirt
NG68

- Colour woven
- 100gsm 60% Cotton/40% Polyester
- Short sleeved
- Breast pocket with pen division
- Button down collar
- 40° wash
- Sizes: XS - XXL

Colours: Royal & White check /
Black & White check

Unisex Shirt
NG25

- 105gsm colour woven
- 55% Cotton/45% Polyester
- Short sleeved
- Breast pocket with pen division
- 40° wash
- Sizes: XS - XXL

Colours: Mid Blue / Terracotta /
Pistachio / Biscuit

See pages 86 - 87 for
other colours

Unisex Shirt
NU951

- 100gsm 60% Cotton/40% Polyester
- End on end weave
- Short sleeved
- Breast pocket with pen division
- 40° wash
- Sizes: XS - XXL

Colours: Sapphire / Amethyst / Ruby

See page 88 for other colours

For co-ordinating
aprons see page 145



NG25
Mid Blue



40°

COTTON
RICH



Unisex

NU951
Sapphire

For casual trousers see pages 94 & 243 and 248 - 249

cotton rich longer lasting colour
comfort & co-ordination

NG25
Terracotta



Unisex Shirt
NG25

- 105gsm colour woven
 - 55% Cotton/45% Polyester
 - Short sleeved
 - Breast pocket with pen division
 - 40° wash
 - Sizes: XS - XXL
- Colours:** Terracotta / Pistachio / Biscuit / Mid Blue

NG25
Biscuit



NG25
Pistachio



For co-ordinating aprons
see page 150



For co-ordinating T-shirts
see page 90



For co-ordinating shirts &
blouses see pages 52 - 53



NG25
Mid Blue

All items

COTTON RICH

40°



Unisex

colour woven - non-fade quality fabric
cotton rich comfort - unisex shirts

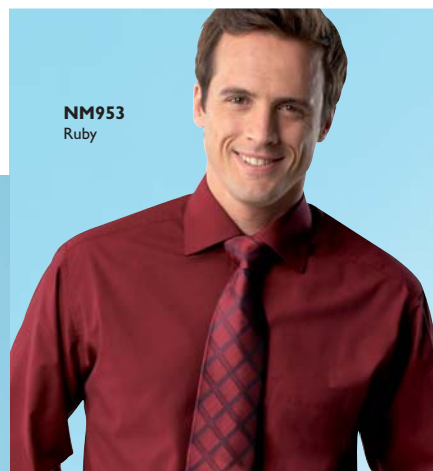
NU951
Sapphire



NU951
Amethyst



NM953
Ruby



NU951
Ruby



For co-ordinating mens shirts
see pages 44 - 45

NF958
Amethyst



For co-ordinating womens blouses
see pages 40 - 43

NF958
Sapphire



**Unisex Shirt
NU951**

- 100gsm 60% Cotton/
40% Polyester
- End on end weave
- Short sleeved
- Breast pocket with pen division
- 40° wash
- Sizes: XS - XXL

Colours: Sapphire / Amethyst / Ruby



Unisex

quality t-shirts & co-ordinates
reliable value



CZ8
White



D307
Navy



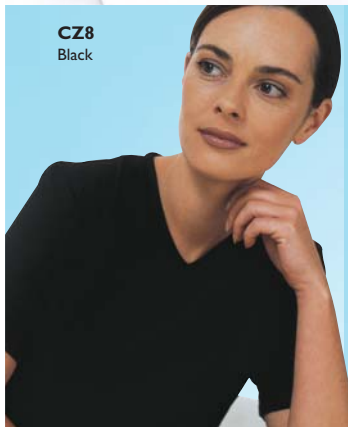
G200
Grey



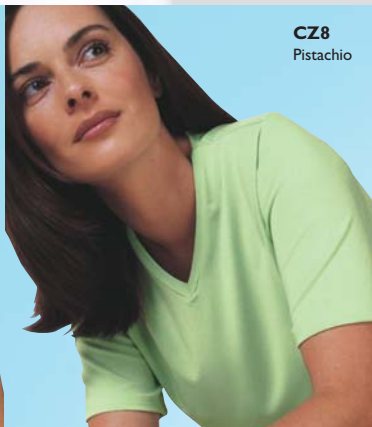
W426
Navy



CADENZA
Consultant Designer Bruce Oldfield



CZ8
Black



CZ8
Pistachio

pure cotton essential in 10 colours

Unisex T-shirt
W441

- 190gsm* 100% Cotton
- Short sleeved
- Crew neck • 40° wash
- Chest sizes:
S fits up to 91.5cm (36ins)
M fits up to 96.5cm (38ins)
L fits up to 101.5cm (40ins)
XL fits up to 112cm (44ins)
XXL fits up to 122cm (48ins)

Colours: White / Royal / Dark Navy / Bottle Green / Red / Pale Blue / Black / Burgundy / Kelly Green / Yellow

*White is 180gsm



Unisex



W441
Pale Blue

W441
Royal

For details of adding your message / logo see pages 2 - 3

Womens T-shirt
CZ8

- 220gsm 96% Cotton/4% Lycra
- 40° wash
- Bust sizes:
S fits up to 81cm (32ins)
M fits up to 90cm (35 1/2ins)
L fits up to 98cm (38 1/2ins)
XL fits up to 105.5cm (41 1/2ins)

Colours: Black / Pistachio / White / Mid Blue



Leggings
W426

- 96% Cotton/4% Lycra
- Elasticated waist & underfoot strap
- 40° wash
- Length: 66cm (26ins)
- Sizes: 8 - 10, 12 - 14, 16 - 18

Colours: Navy / Black / Bottle Green / Burgundy



Womens Shorts
D307

- 210gsm 65% Polyester/35% Cotton
- Zip fly with stud
- Two hip & one back pocket
- Pleat front • Belt loops
- 50° wash
- Length: 48cm (19ins)
- Sizes: 8 - 26

Colours: Navy / Black / Grey



Mens Shorts
G200

- 210gsm 65% Polyester/35% Cotton
- Zip fly with stud
- Two hip & one back pocket
- Pleat front • Belt loops
- 50° wash
- Length: 52cm (20 1/2ins)
- Sizes: 71 - 107cm (28 - 42ins)

Colours: Navy / Black / Grey / White



quality to suit you
cotton rich & easy care casuals



JO1
Red
270
gsm
COTTON
RICH



JO3
Navy



Dark Navy
Order Dark Navy to co-ordinate with Sailor Navy workwear

Navy
Order Navy to co-ordinate with Navy workwear

Royal

Pale Blue

Bottle Green

Kelly Green

Burgundy

Red

Black

Pale Grey

White

W232
Royal
260
gsm



For emblem service see pages 2 - 3

Unisex Sweatshirt
JO1

- 270gsm 70% Cotton/30% Polyester
- Ribbed cuffs, neck & hem
- 40° wash
- Chest sizes:
S fits up to 81cm (32ins)
M fits up to 91.5cm (36ins)
L fits up to 101.5cm (40ins)
XL fits up to 112cm (44ins)
XXL fits up to 122cm (48ins)
- **Colours:** Navy / Royal / Bottle Green / Burgundy / Red / Black

Unisex Joggers
JO3

- 260gsm 65% Cotton/35% Polyester
- Drawstring waist
- 40° wash
- Waist sizes:
S fits up to 71cm (28ins)
M fits up to 79cm (31ins)
L fits up to 86.5cm (34ins)
XL fits up to 94cm (37ins)
- **Colours:** Navy / Black

For footwear see pages 276 - 281

Unisex Sweatshirt
W232

- 260gsm 65% Polyester/35% Cotton
- Ribbed cuffs, neck & hem
- 40° wash
- Chest sizes:
S = 81 - 86.5cm (32 - 34ins)
M = 91.5 - 96.5cm (36 - 38ins)
L = 101.5 - 106.5cm (40 - 42ins)
XL = 112 - 117cm (44 - 46ins)
XXL = 122 - 127cm (48 - 50ins)
XXXL = 132 - 137cm (52 - 54ins)
- **Colours:** Dark Navy / Navy / Royal / Pale Blue / Bottle Green / Kelly Green / Burgundy / Red / Black / Pale Grey / White

Colours for W232 sweatshirt

easy care & pure cotton - quality tested mens classic trousers



NG11
Stone

245
gsm

COTTON
RICH

60°



NG14
Black

260
gsm

STRETCH

Industrially
launderable



24028
Navy

245
gsm

Leather Belt G83

- Width: 3cm (1 1/4ins)
- Sizes: S = 76 - 81cm (30 - 32ins)
M = 86 - 91cm (34 - 36ins)
L = 97 - 102cm (38 - 40ins)
XL = 107 - 112cm (42 - 44ins)
XXL = 117 - 122cm (46 - 48ins)
- Colours: Navy / Black / Brown

Colour Swatches

Please see text for colour availability by style

STONE

NAVY

BLACK

BOTTLE GREEN

SAILOR NAVY

For safety footwear see pages 276 - 281

Cotton Rich Chinos NG11R / NG11T

- 245gsm 60% Cotton/40% Polyester
- Zip fly with button
- Two hip pockets, one back pocket
- Double pleat front & belt loops
- 60° wash
- Inside leg: Regular 79cm (31ins)
Tall 84cm (33ins)
- Waist sizes: 71 - 117cm (28 - 46ins)

Colours: Stone / Black / Sailor Navy

Trousers NG14R / NG14T

- Comfort stretch
- 260gsm 65% Polyester/35% Cotton
- Jeans styling
- Zip fly with button
- Two hip & back pockets
- Flat front & belt loops
- Industrially launderable
- Inside leg: Regular 79cm (31ins)
Tall 84cm (33ins)
- Waist sizes: 71 - 117cm (28 - 46ins)

Colours: Black / Sailor Navy

Easy Care Chinos 24028S / 24028R / 24028T / 24028A

- 245gsm 65% Polyester/35% Cotton
- Zip fly with button
- Two hip pockets, one back pocket
- Single pleat front & belt loops
- 40° wash
- Inside leg: Short 73.5cm (29ins)
Regular 79cm (31ins)
Tall 84cm (33ins)
Extra Tall 91.5cm (36ins)
- Waist sizes: 71 - 137cm (28 - 54ins)

Colours: Navy / Black

anti-pill fleeces

Unisex Thermal Fleece QW16

- 485gsm 60% Polyester/40% Acrylic
- Zip front
- Two pockets
- Elasticated hem & cuffs
- 40° wash
- Sizes: S = 81.5 - 86.5cm (32 - 34ins)
M = 91.5 - 96.5cm (36 - 38ins)
L = 101.5 - 107cm (40 - 42ins)
XL = 112 - 117cm (44 - 46ins)
XXL = 122 - 127cm (48 - 50ins)
- Colour: Navy

QW16 Navy

485
gsm

Thermal

Thermal

Thermal

Thermal

Thermal

Thermal

Thermal

Thermal

Thermal

Thermal

Thermal

Thermal

Thermal

Thermal

Thermal

Thermal

Thermal

Thermal

Thermal

Thermal

Thermal

Thermal

Thermal

Thermal

Thermal

Thermal

Thermal

Thermal

Thermal

Thermal

Thermal

Thermal

Thermal

Thermal

Thermal

Thermal

Thermal

Thermal

Thermal

Thermal

Thermal

Thermal

Thermal

Thermal

Thermal

Thermal

Thermal

Thermal

Thermal

Thermal

Thermal

Thermal

Thermal

Thermal

Thermal

Thermal

Thermal

Thermal

Thermal

NG42 Navy

300
gsm

All fleeces

40°

Unisex

Unisex

Unisex

Unisex

Unisex

Unisex

Unisex

Unisex

Unisex

Unisex

Unisex

Unisex

Unisex

Unisex

Unisex

Unisex

Unisex

Unisex

Unisex

Unisex

Unisex

Unisex

Unisex

Unisex

Unisex

Unisex

Unisex

Unisex

Unisex

Unisex

Unisex

Unisex

Unisex

Unisex

Unisex

Unisex

Unisex

Unisex

Unisex

Unisex

Unisex

Unisex

Unisex

Unisex

Unisex

Unisex

Unisex

Unisex

Unisex

Unisex

Unisex

Unisex

Unisex

Unisex

Unisex

Unisex

Unisex

Unisex

Unisex

M6 Navy

485
gsm

485
gsm

485
gsm

485
gsm

485
gsm

485
gsm

485
gsm

485
gsm

485
gsm

485
gsm

485
gsm

485
gsm

QW28 Navy

300
gsm

300
gsm

300
gsm

300
gsm

300
gsm

300
gsm

300
gsm

300
gsm

300
gsm

300
gsm

300
gsm

300
gsm

For details of adding your message / logo see pages 2 - 3

For combats and other workwear trousers see pages 232 - 233

quality lined & anti-pill fleeces
long lasting easy care

All items



Unisex



Zips into 16002
unisex jacket on
page 101

15002
Navy

**320
gsm**

**Unisex Heavyweight
Fleece
15002**

- 320gsm 100% Polyester
- Anti-pill fleece
- Zip front
- Two external zipped pockets
- Elasticated cuffs
- Elasticated drawcord with stoppers
- Zips into 16002 Unisex Jacket
- 40° wash
- Sizes:
S = 86.5 - 91.5cm (34 - 36ins)
M = 96.5 - 101.5cm (38 - 40ins)
L = 106.5 - 112cm (42 - 44ins)
XL = 117 - 122cm (46 - 48ins)
XXL = 127 - 132cm (50 - 52ins)
XXXL = 137 - 142cm (54 - 56ins)

Colour: Navy



15001
Navy

**280
gsm** FULLY
LINED

**Unisex Lined Fleece
15001**

- 280gsm 100% Polyester
- Anti-pill fleece
- Zip front
- Two external zipped pockets
- Internal zipped breast pocket
- Elasticated cuffs
- Elasticated drawcord with stoppers
- Fully breathable microfibre lining
- Zips into 16002 Unisex Jacket
- 40° wash
- Sizes:
S = 86.5 - 91.5cm (34 - 36ins)
M = 96.5 - 101.5cm (38 - 40ins)
L = 106.5 - 112cm (42 - 44ins)
XL = 117 - 122cm (46 - 48ins)
XXL = 127 - 132cm (50 - 52ins)
XXXL = 137 - 142cm (54 - 56ins)

Colour: Navy

Zips into 16002
unisex jacket on
page 101

NG19
Red

**300
gsm**

NEW SIZE
AVAILABLE



NG19
Navy

**300
gsm**

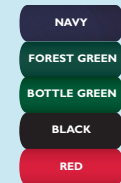


**Unisex Fleece
NG19**

- 300gsm 100% Polyester
- Anti-pill fleece
- Zip front
- Two zipped pockets
- Elasticated cuffs
- Elasticated drawcord with stoppers
- 40° wash
- Sizes:
XS = 76 - 81cm (30 - 32ins)
S = 86.5 - 91.5cm (34 - 36ins)
M = 96.5 - 101.5cm (38 - 40ins)
L = 106.5 - 112cm (42 - 44ins)
XL = 117 - 122cm (46 - 48ins)
XXL = 127 - 132cm (50 - 52ins)
XXXL = 137 - 142cm (54 - 56ins)

Colours: Navy / Forest Green /
Bottle Green / Black / Red

Colour Swatches
Please see text for
colour availability
by style



For details of adding your message / logo see pages 2 - 3

waterproof parka with fleece - 3 in one

trustworthy performance



Unisex



Unisex Parka WR435

- 100% Nylon outer, 100% Polyester lining
- Waterproof
- Concealed two-way zip front
- External & internal pockets
- Taped seams
- Tunnel collar
- Elasticated waist drawcord & cuffs
- Fold-away hood
- Underarm vents
- 40° wash
- Sizes: S - XXL

Colours:

Blue parka with navy contrast /
Navy parka with blue contrast



Navy option has blue contrast as per
WR436 picture

WR435
Blue



WR437
Black



WR436
Navy



Unisex Fleece WR437

- 280gsm 100% Polyester
- Anti-pill fleece
- Zip front
- Two pockets
- Elasticated hem & cuffs
- 40° wash
- Sizes: S - XXL

Colours: Black / Navy

3 in 1 Unisex Parka WR436

- 100% Nylon outer
- 100% Polyester fleece • Waterproof
- Fleece designed to zip into parka
- Parka details as WR435
- Fleece details as WR437
- 40° wash • Sizes: S - XXL

Colours*:

Navy parka with blue contrast /
Blue parka with navy contrast
*Both with navy fleece



Blue option has navy contrast as per
WR435 picture

Knitted Hat W378

- 100% Acrylic
- One size

Colours: Navy / Burgundy / Black



quality breathable microfibre
practical warm & weatherproof

All items

PEACH TOUCH



Unisex



16003
Navy

WATER RESISTANT

TEFLON FINISH

**Unisex Bomber Jacket
16003**

- 100% PU coated Polyester
 - Peached microfibre • Teflon coated
 - Water resistant & breathable
 - Padded lining
 - Zip front
 - External & internal pockets
 - Pen pocket on sleeve
 - Elasticated, ribbed cuffs & hem
 - 40° wash
 - Sizes:
 - S = 86.5 - 91.5cm (34 - 36ins)
 - M = 96.5 - 101.5cm (38 - 40ins)
 - L = 106.5 - 112cm (42 - 44ins)
 - XL = 117 - 122cm (46 - 48ins)
 - XXL = 127 - 132cm (50 - 52ins)
 - XXXL = 137 - 142cm (54 - 56ins)
 - XXXXL = 147 - 152cm (58 - 60ins)
- Colour: Navy

versatile waterproof jacket - value protection



16002
Navy

TAPED SEAMS

WATER PROOF

TEFLON FINISH

**Unisex Coat
16001**

- 100% PU coated Polyester
 - Peached microfibre
 - Water resistant & breathable
 - Flat piped yoke
 - Padded lining
 - Stud front & concealed zip
 - External & internal pockets
 - Fold-away hood
 - Storm cuffs
 - Elasticated waist drawcord
 - 40° wash
 - Sizes: S = 86.5 - 91.5cm (34 - 36ins)
 - M = 96.5 - 101.5cm (38 - 40ins)
 - L = 106.5 - 112cm (42 - 44ins)
 - XL = 117 - 122cm (46 - 48ins)
 - XXL = 127 - 132cm (50 - 52ins)
- Colour: Navy

WATER RESISTANT

16001
Navy



3 in 1 combination - order jacket & fleece separately & wear together

**Unisex Jacket
16002 (Jacket only)**

- 100% PU coated Polyester
 - Peached microfibre
 - Teflon coated
 - Waterproof & breathable
 - Fully lined • Flat piped yoke
 - Stud front & concealed zip
 - 2nd internal zip to attach either 15001 or 15002 fleece
 - External & internal pockets
 - Elasticated cuffs with Velcro fasteners
 - Taped seams • Fold-away hood
 - Elasticated waist drawcord
 - 40° wash
 - Sizes: S = 86.5 - 91.5cm (34 - 36ins)
 - M = 96.5 - 101.5cm (38 - 40ins)
 - L = 106.5 - 112cm (42 - 44ins)
 - XL = 117 - 122cm (46 - 48ins)
 - XXL = 127 - 132cm (50 - 52ins)
 - XXXL = 137 - 142cm (54 - 56ins)
- Colour: Navy

unlined

15002
Navy



lined

15001
Navy



A choice of two zip-in fleeces available separately - see page 96

lightweight & waterproof jackets
concealed two-way zip & fold-away hood

WR414
Navy



WR414
Red



WR414
Blue



Unisex

Unisex Parka
WR414

- 100% Nylon outer, 100% Polyester lining
- Waterproof
- Concealed two-way zip front
- Anti-pill fleece lining
- External & internal pockets
- Taped seams • Tunnel collar
- Elasticated waist drawcord
- Adjustable cuffs • Fold-away hood
- Sizes: S - XXL

Colours: Navy / Red / Blue

fleece lined bomber jacket in 3 colours

WR401
Navy



WR401
Black



Unisex

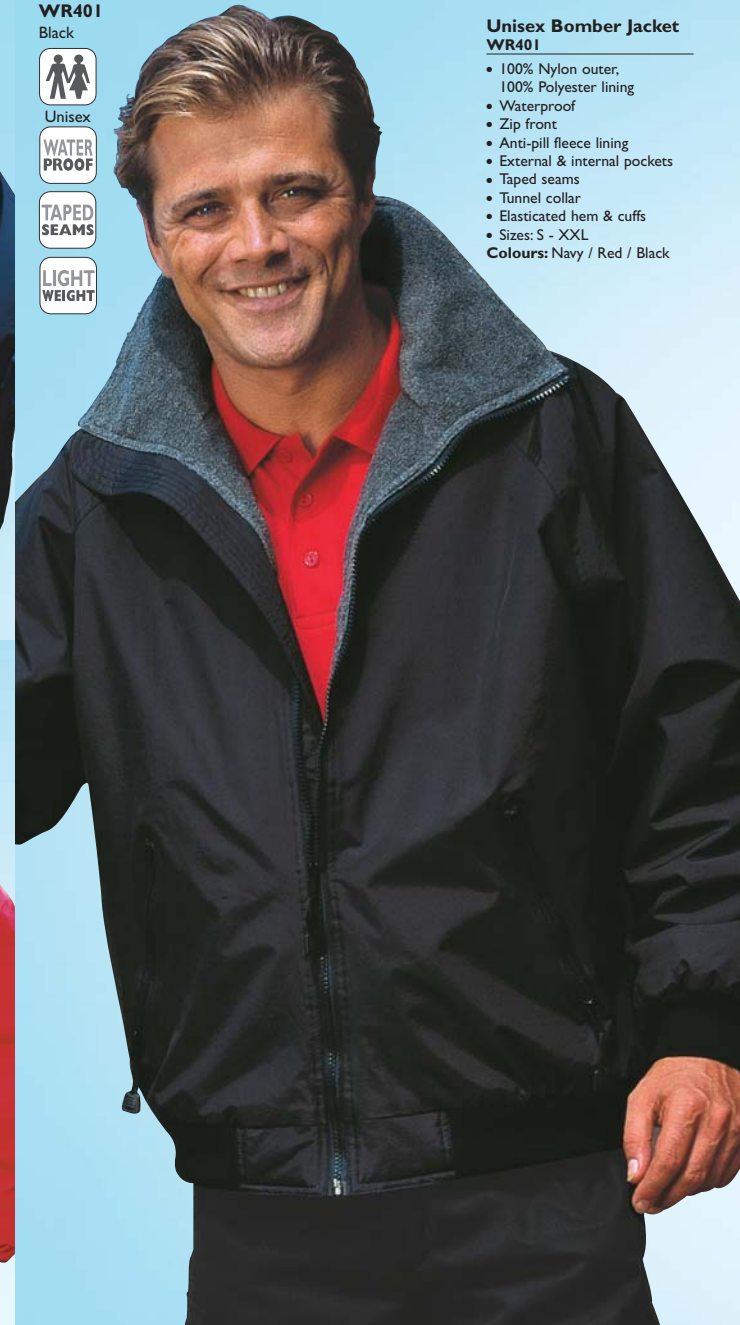


Unisex Bomber Jacket
WR401

- 100% Nylon outer, 100% Polyester lining
- Waterproof
- Zip front
- Anti-pill fleece lining
- External & internal pockets
- Taped seams
- Tunnel collar
- Elasticated hem & cuffs
- Sizes: S - XXL

Colours: Navy / Red / Black

WR401
Red



water & showerproof - reliable quality
warm linings & practical detail

All items
Unisex

QW13
Navy

PU COATED

FOLD-AWAY HOOD



W227
Navy / Jade

SHOWER PROOF

FOLD-AWAY HOOD



QW9
Navy

SHOWER PROOF



Unisex Coat QW13

- 100% PU Coated Nylon outer, padded lining
- Stud front & concealed zip
- External & internal pockets
- Corduroy collar
- Fold-away hood
- Drawcord hem with toggles
- 40° wash
- Sizes:
- S = 86.5 - 91.5cm (34 - 36ins)
- M = 96.5 - 101.5cm (38 - 40ins)
- L = 107 - 112cm (42 - 44ins)
- XL = 117 - 122cm (46 - 48ins)
- XXL = 127 - 137cm (50 - 54ins)
- Colours:** Navy / Green

Unisex Jacket W227

- 65% Polyester/35% Cotton Chintz outer, padded lining
- Showerproof
- Stud front & concealed zip
- External & internal pockets
- Fold-away hood • Elasticated hem & stud cuffs • 40° wash
- Sizes:
- S = 86.5 - 91.5cm (34 - 36ins)
- M = 96.5 - 101.5cm (38 - 40ins)
- L = 107 - 112cm (42 - 44ins)
- XL = 117 - 122cm (46 - 48ins)
- Colours:** Navy with jade contrast / Navy with red contrast / Black with olive contrast

QW3
Bottle Green

WATER PROOF

FOLD-AWAY HOOD



W148
Navy

SHOWER RESISTANT

FOLD-AWAY HOOD



Unisex Jacket QW9

- 65% Polyester/35% Cotton outer, thermal padded lining
- Showerproof • Stud front & concealed zip • External & internal pockets • Mandarin collar
- Double action back
- Elasticated hem & cuffs
- Stud epaulettes • 60° wash
- Sizes:
- S = 81.5 - 86.5cm (32 - 34ins)
- M = 91.5 - 96.5cm (36 - 38ins)
- L = 101.5 - 107cm (40 - 42ins)
- XL = 112 - 117cm (44 - 46ins)
- XXL = 122 - 127cm (48 - 50ins)
- Colour:** Navy

Unisex Coat QW3

- 100% PU Coated Nylon outer, padded lining
- Waterproof
- Stud front & concealed two-way zip
- External & internal pockets
- Fold-away hood
- Storm cuffs • 40° wash
- Sizes:
- S = 86.5 - 91.5cm (34 - 36ins)
- M = 96.5 - 101.5cm (38 - 40ins)
- L = 107 - 112cm (42 - 44ins)
- XL = 117 - 122cm (46 - 48ins)
- XXL = 127 - 137cm (50 - 54ins)
- Colours:** Bottle Green / Royal / Navy / Black / Burgundy

Unisex Coat W148

- 100% PU Coated Nylon, padded lining
- Shower resistant
- Stud front & concealed two-way zip
- External & internal pockets
- Fold-away hood
- Storm cuffs • 40° wash
- Sizes:
- S = 86.5 - 91.5cm (34 - 36ins)
- M = 96.5 - 101.5cm (38 - 40ins)
- L = 107 - 112cm (42 - 44ins)
- XL = 117 - 122cm (46 - 48ins)
- XXL = 127 - 132cm (50 - 52ins)
- Colours:** Navy / Black

Colour Swatches

Please see text for colour availability by style



thermal & showerproof outerwear

tough / functional & durable

All items

 Unisex

QW14
Navy

SHOWER PROOF



W120
Navy

100% NYLON

TEAR RESISTANT



Unisex Bodywarmer

QW14

- 65% Polyester/35% Cotton Chintz, padded lining
- Showerproof • Stud front & concealed zip
- External & internal pockets • 40° wash
- Sizes: S - XXL
- Colours:** Navy / Black / Green

Unisex Bodywarmer

W120

- 100% Nylon, padded lining • Tear resistant
- 40° wash • Two pockets • Stud front • Sizes: S - XL
- Colours:** Navy / Black / Bottle Green / Bright Blue

Unisex Thermal Bodywarmer

W373

- 60% Cotton/40% Polyester, padded lining • 40° wash
- Knitted collar, corduroy shoulder yoke
- External & internal pockets • Two-way zip front
- Sizes: S - XXL
- Colours:** Navy / Bottle Green

Unisex Thermal Bodywarmer

W380

- 65% Polyester/35% Cotton, padded lining
- Two-way zip front • External & internal pockets
- 40° wash • Sizes: S - XXL
- Colours:** Navy / Black / Bottle Green / Burgundy / Royal

Unisex Thermal Bodywarmer

W381

- 65% Polyester/35% Cotton, padded lining
- Stud front • Two breast & two lower pockets
- Side vents • 40° wash • Sizes: S - XXL
- Colours:** Navy / Bottle Green / Red

bodywarmer size chart - chest sizes in cm and ins

S	M	L	XL	XXL*
81.5 - 86.5	91.5 - 96.5	101.5 - 107	112 - 117	122 - 127
32 - 34	36 - 38	40 - 42	44 - 46	48 - 50

* not W120

Unisex Thermal Coat

W442

- 100% PU Coated Nylon outer, padded lining
- Velcro front & concealed two-way zip
- Two hip pockets • Fold-away hood • Taped seams
- Storm cuffs • 40° wash
- Chest sizes: S fits up to 91.5cm (36ins)
- M fits up to 101.5cm (40ins)
- L fits up to 112cm (44ins)
- XL fits up to 122cm (48ins)
- Colours:** Navy / Green

Unisex Trousers

W230

- 100% PU Coated Nylon • Water resistant
- Elasticated waist • Taped seams • Twin studs at hem
- 40° wash • Inside leg: 76cm (30ins)
- Waist sizes: S = 71 - 76cm (28 - 30ins)
- M = 81 - 86.5cm (32 - 34ins)
- L = 91.5 - 96.5cm (36 - 38ins)
- XL = 101.5 - 107cm (40 - 42ins)
- Colours:** Navy / Black / Green / Hi-Vis Yellow

W442
Navy

100% NYLON

FOLD-AWAY HOOD

Thermal



Unisex Anorak

W229

- 100% PU Coated Nylon
- Water resistant
- Zip front • Two hip pockets with storm flaps
- Taped seams • Drawcord on hood & hem
- Elasticated cuffs
- 40° wash
- Chest sizes: S fits up to 91.5cm (36ins)
- M fits up to 101.5cm (40ins)
- L fits up to 112cm (44ins)
- XL fits up to 122cm (48ins)
- Colours:** Navy / Black / Green / Hi-Vis Yellow

100% NYLON

WATER RESISTANT

W229

Navy



thermal bodywarmers

for womens thermal waistcoat see page 251

W373
Navy

COTTON RICH



W380
Burgundy

W381
Navy



Colour Swatches Please see text for colour availability by style



garment care

call for specialist advice

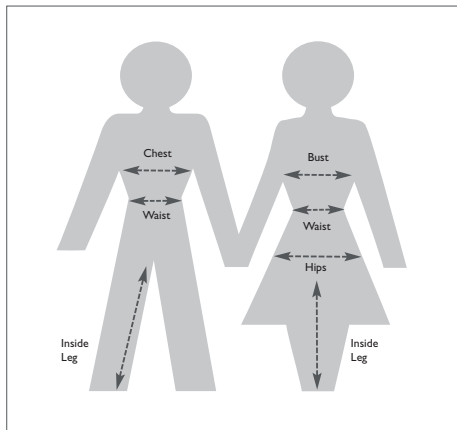
how to measure

A good fit is vital for a professional look and wearer comfort. Please follow these guidelines when choosing your garments.

- Take body measurements and do not measure over your clothing.
- Check whether the garment you are measuring for is sized in inches or centimetres. Use the same unit of measurement when measuring and placing your order.
- Ask someone else to measure you for greater accuracy.
- Take the measurement from the fullest part of your body.
- Do not pull the tape too tight.
- Choose the length of your item of clothing from an existing garment in your wardrobe.
- Always order the garment to accommodate the largest body measurement.

where to measure

- Bust or Chest** Measure over the fullest part of the chest under the arms and straight across the back
- Waist** Measure around the natural waistline - with the tape snug but not tight
- Hips/Seat** Measure the fullest part of the body, generally 20cm below the waist
- Inside leg** Measure from crotch to floor. What is your normal inside leg measurement?



garment care

Please read the care instructions provided on garment labels before washing. Follow these instructions carefully to maintain the good appearance and life of the garment.

- Wash dark and light colours separately. Colour can rub off onto other garments if washes are mixed.
- Keep garments with different fibre content separate when washing.
- Wash garments frequently to prolong their life - avoiding heavy soiling.
- Follow tumble drying instructions carefully as per the symbol on the care label.
- For best results 100% Cotton garments should be pressed whilst slightly damp.
- Reshape knitted garments whilst damp, and dry flat.
- Do not press lightweight garments with steam.
- Do not press suiting on the outside, press inside out or use a cloth and steam press lightly.

care symbols

washing		ironing	
	Do not wash		Do not iron
	Hand wash		Cool iron 110°C/230°F
	Machine wash, max temp 40°C/104°F Cotton cycle		Warm iron 150°C/302°F
	Machine wash, max temp 40°C/104°F Synthetic cycle, reduced mechanical agitation		Hot iron 200°C/392°F
drying		dry cleaning	
	Do not tumble dry		Do not dry clean
	Tumble dry low heat		Dry clean in any solvent except Trichlorethylene
	Tumble dry high heat		
others			
	Do not bleach		Chlorine bleach may be used direct
industrially launderable			
	When you see this symbol in the catalogue the garment is suitable for industrial laundry. This process washes at temperatures exceeding 70°C and uses a tunnel finish drying process in excess of 150°C in a commercial environment.		
mens and womens washable suiting jackets - pages 4 - 13			
Machine wash at 40° / Do not bleach / Cool iron with cloth placed between iron and garment / Do not tumble dry / Immediately after wash remove the garment and place on the hanger provided to dry / Suitable for dry cleaning			

size charts

call for sizes outside the standard range

womens suiting: sized in dress sizes

Order Size	8	10	12	14	16
Bust	cm 79 - 83 ins 31 - 32½	84 - 87 33 - 34	88 - 91 34½ - 36	92 - 96 36 - 38	97 - 101 38 - 40
Waist	cm 61 - 65 ins 24 - 25½	66 - 69 26 - 27	70 - 73 27½ - 29	74 - 78 29 - 30½	79 - 83 31 - 32½
Hips	cm 84 - 88 ins 33 - 34½	89 - 92 35 - 36	93 - 96 36½ - 38	97 - 101 38 - 40	102 - 106 40 - 42
Order Size	18	20	22	24	26
Bust	cm 102 - 106 ins 40 - 42	107 - 111 42 - 43½	112 - 117 44 - 46	118 - 123 46½ - 48½	124 - 129 49 - 51
Waist	cm 84 - 88 ins 33 - 34½	89 - 93 35 - 36½	94 - 99 37 - 39	100 - 105 39½ - 41	106 - 111 42 - 43½
Hips	cm 107 - 111 ins 42 - 43½	112 - 117 44 - 46	118 - 123 46½ - 48½	124 - 129 49 - 51	130 - 135 51 - 53

womens garments (excl. suiting): sized in dress sizes

Order Size	8	10	12	14	16	18	20	22	24	26	28
Bust	cm 79 ins 31	84 33	89 35	94 37	99 39	104 41	109 43	114 45	119 47	124 49	130 51
Waist	cm 59 ins 23	64 25	69 27	74 29	79 31	84 33	89 35	94 37	99 39	104 41	109 43
Hips	cm 84 ins 33	89 35	94 37	99 39	104 41	109 43	114 45	119 47	124 49	129 51	134 53

womens coats, tunics & dresses: sized in centimetres

Order Size	80	84	88	92	96	100	104	108	112	120	128	136
Bust	cm 80 ins 31½	84 33	88 34½	92 36	96 38	100 39½	104 41	108 42½	112 44	120 47½	128 50½	136 53½
Waist	cm 61 ins 24	65 25½	69 27	73 28½	77 30	81 32	85 33½	89 35	93 36½	101 39½	109 43	117 46
Hips	cm 86 ins 34	90 35½	94 37	98 38½	102 40	106 42	110 43½	114 45	118 46½	126 49½	134 53	142 56

dress length information:
ST312, D312, HP297, ST297, D308, D152, D314, D337

Short - 100cm (39½/zins) to suit height of 5'2" & under
Regular - 106cm (42ins) to suit height of 5'3" - 5'6"
Tall - 112cm (44ins) to suit height of 5'7" - 5'9"
Unhemmed - 122.5cm (48ins) hem to a length of your choice

tabards

Order Size	S	M	L	XL
Bust	cm 80 - 88 ins 31½ - 34½	92 - 100 36 - 39½	104 - 112 41 - 44	116 - 124 45½ - 49

mens suiting & casual trousers: sized in inches

Order Size	28	30	32	34	36	38	40
Chest	ins - cm -	- -	32 81	34 86	36 91	38 96	40 102
Waist	ins 28 cm 71	30 76	32 81	34 86	36 91	38 96	40 102
Order Size	42	44	46	48	50	52	54
Chest	ins 42 cm 107	44 112	46 117	48 122	50 127	- -	- -
Waist	ins 42 cm 107	44 112	46 117	48 122	50 127	52 132	54 137

mens shirts: sized in inches

Collar	ins 14 cm 35.5	14½ 37	15 38	15½ 39	16 41	16½ 42	17 43	17½ 44	18 46	18½ 47	19 48	19½ 49
--------	-------------------	-----------	----------	-----------	----------	-----------	----------	-----------	----------	-----------	----------	-----------

mens coats, tunics, trousers & workwear also unisex chefs jackets - W31, W151 & W131: sized in centimetres

Order Size	68	72	76	80	84	88	92	96
Chest/	cm 68	72	76	80	84	88	92	96
Waist	ins 27	28½	30	31½	33	34½	36	38
Order Size	100	104	108	112	116	124	132	140
Chest/	cm 100	104	108	112	116	124	132	140
Waist	ins 39½	41	42½	44	45½	49	52	55

unisex shirts, outerwear, chefswear & scrub suits

Order Size	XS	S	M	L	XL	XXL
Dress Size	6 - 8	10 - 12	14 - 16	18 - 20	22 - 24	26 - 28
Chest/	cm 76 - 81	86 - 91	96 - 102	107 - 112	117 - 122	127 - 132
Bust	ins 30 - 32	34 - 36	38 - 40	42 - 44	46 - 48	50 - 52
Waist	cm 61 - 66	71 - 76	81 - 86	91 - 96	102 - 107	112 - 117
Collar	ins 24 - 26	28 - 30	32 - 34	36 - 38	40 - 42	44 - 46
Collar	ins 34 - 35	36 - 37	38 - 39	40 - 41	43 - 44	45 - 46
	ins 13 - 13½	14 - 14½	15 - 15½	16 - 16½	17 - 17½	18 - 18½

boater & hatbands D213 / D219 / SH738

Order Size	S	M	L	XL
ins	6½/8	6¾/8	7¼/8	7¾/8

footwear All styles excluding those listed below

UK	3	4	5	6	7	8	9	10	11	12	13
Euro	36	37	38	39	41	42	43	44	46	47	48

footwear BB98 / C10 / C11 / RP266

UK	2	3	4	5	5½	6	7	8	8½	9	10	11	12	12½	13
Euro	34	35	36	37	38	39	40	41	42	43	44	45	46	47	48

footwear FW112 / FW129 / FW148 / FW504

UK	6	7	8	9	10	11	12
Euro	40	41	42	43	44	45	46

footwear GT581

UK	5	6	7	8	9	10	11	12	13
Euro	37.5	38.5	40	42	43	44	45	46.5	48.5

footwear SX174

UK	3	4	5	6	7	8	9	10	11	12
Euro	36	37	38	40	41	42	43	44	46	47

notes:

- All measurements are BODY measurements
- Please see product pages for length information
- Sizes outside the standard catalogue range may be available at a surcharge, please call for details 0845 155 2288
- When ordering maternity wear, please order your usual size as the garment construction will accommodate your change in shape during pregnancy
- For casualwear/leisurewear see details on the product pages

terms & conditions

General

These terms apply to all sales by Alexandra to the exclusion of any other terms unless otherwise agreed in writing.

Alexandra reserves the right to make changes to the items shown in this catalogue and to remove selected styles.

Delivery

Stock items ordered by 2pm will normally be dispatched on the day of receipt of order using our standard two working day delivery service. Anticipated delivery dates for non-catalogue or personalised garments may be confirmed at the time of ordering. Unless agreed in writing time is not of the essence.

Alexandra reserves the right to deliver the goods in reasonable instalments, in which case you shall accept and pay for the goods in reasonable instalments. Each instalment is to be treated as a separate contract.

Any claim for non-delivery of or damage to the goods in transit should be made within seven days of the date of the invoice for them. Our liability in respect of any such claim is limited at our option to replacement of the goods or refund of the price and does not extend to any indirect or consequential loss.

Price

The price of the goods will be the price ruling at the date of dispatch. All prices quoted exclude post & packing and VAT.

Any applicable post & packing and VAT is payable by you in addition to the contract price.

Orders up to a value of £150 plus VAT will incur a post & packing charge of £4.95 plus VAT per order for deliveries within most areas of mainland UK. A next day service, providing delivery by 5pm the next working day (Mon-Fri only), is available within most areas of the UK at a cost of £5.45 plus VAT per package, inclusive of any post & packing charge, up to a maximum weight of 25kg per package. Orders must be received by 2pm. In areas affected by a congestion charge a surcharge of 50p plus VAT per order may be added. In the event that the carrier is unable to deliver to you and a second delivery journey is required, or if the second attempted delivery is unsuccessful, in which case the goods will be returned to Alexandra, additional carriage charges incurred may be charged to you. Alexandra will not be liable for any consequential loss caused by failure of the carrier to deliver.

Any other additional services such as embroidery or other personalisation of garments, alteration to garments, manpacking etc. will incur an additional charge. Prices for these services will be confirmed at the time of ordering.

Payment

Invoices will be issued on the day of dispatch of the goods and must be paid within thirty days of invoice date, subject to status.

If you fail to pay us in full on the due date:

1. We may suspend or cancel future deliveries;
 2. We may cancel any discount offered to you;
 3. You must pay us interest at the rate equivalent to that set for the purposes of Section 6 of the Late Payment of Commercial Debts (Interest) Act 1998;
- a) calculated (on a daily basis) from the date of our invoice until payment;
 - b) compounded on the first day of each calendar month;
 - c) before & after any judgement (unless the court orders otherwise).

If you have not paid Alexandra all amounts due on an invoice and 45 days have passed since the due date for payment then Alexandra has the right to charge you an administrative fee.

Where copy invoices are requested faxed copies will be provided free of charge but there will be a charge of £1 plus VAT for copies required to be sent by post.

You are to indemnify Alexandra in full and hold Alexandra harmless from all expenses and liabilities Alexandra may incur (directly or indirectly and including finance costs and legal costs on a full indemnity basis) following any breach by you of any of your obligations under these terms. You are not entitled to set off any debt or claim against other amounts owing to us.

Risk & Ownership

The risk in the goods passes to you when the goods are delivered to the delivery address. Ownership of the goods remains with Alexandra until payment has been received in full for the goods and any other garments for which payment is also due.

Your Data

From time to time we may make our mailing file available to carefully selected companies whose products may be of interest to you. If you do not want us to pass on your details, please write to our customer care department at our Central Sales Office, email us at customercare@alexandra.co.uk or phone 0845 245 5020.

Insolvency

If (a) you make any voluntary arrangement with your creditors or become bankrupt or become subject to an administration order, or go into liquidation; or (b) you cease, or threaten to cease, to carry on business; or (c) Alexandra reasonably believes that any of the above events is about to occur and notifies you accordingly then you shall cease at once to use any goods not then paid for and shall on demand return any of them remaining in your possession. On making such a demand, we are entitled, without incurring any liability to you, to enter your premises and remove and repossess such of our goods as are to be found there, and also to cancel any contract with you.

Force Majeure

Where we are unable to perform due to any circumstances beyond our control we may suspend performance while those circumstances subsist and any agreed date or period for delivery shall be regarded as extended accordingly. If any period of suspension of deliveries lasts for more than three months, either party may cancel the contract by written notice without penalty.

Returns Policy

If any catalogue garments are not required for any reason we will be happy to replace them or to refund their value provided that; (a) they are returned to us carriage paid, unused (other than for the purpose of trying on the garment), within thirty days of delivery; (b) our invoice relating to the relevant goods has been paid by the due date; and (c) a written note is enclosed quoting the invoice number and stating the reason for the garments being returned. Garments which have been used but are returned within seven days under the terms of the Consumer Protection (Distance Selling) Regulations 2000, will also be refunded although a handling fee may be deducted from the refund. In the case of return of ten or more garments a handling charge relating to the administration costs incurred may be applied by Alexandra. Goods returned are done so at your risk and you are advised to use a service which provides a guarantee of delivery. This returns policy does not apply to non-catalogue styles, altered or personalised garments.

Cancellation

If an order for a non-catalogue style, personalised or altered garment is cancelled for any reason you will be charged for any garment, labour or fabric costs that have been incurred in processing the order up to the time of cancellation.

Warranties & Liability

Alexandra warrants that the goods will correspond with their specification and will be free from defects in material and workmanship. In addition, garments constructed from speciality workwear fabric will be guaranteed for a period of twenty four months from purchase. Both of these warranties are subject to the following conditions:

- (a) Alexandra shall not be liable; (i) in respect of any defect arising otherwise than from fair wear and tear, or arising from wilful damage, negligence, failure to follow care instructions, abnormal working conditions, misuse or alteration; (ii) if the total price for the goods has not been paid by the due date; (iii) if the defect arises from any drawing, design or specification supplied by the customer.
- (b) Where goods are faulty, Alexandra shall replace the goods free of charge, rectify the fault, or refund the price of the goods, and Alexandra shall have no further liability. For any sales covered by the Consumer Protection (Distance Selling) Regulations 2000 the customer has the right to request a refund.
- (c) Alexandra shall not be liable for any loss or damage whether direct or consequential or otherwise but in any event Alexandra's liability (if any) shall be limited to the price of the goods.
- (d) Nothing in these terms affects Alexandra's liability for death or personal injury resulting from Alexandra's negligence.
- (e) Nothing in these terms affects your statutory rights.

Samples

Any samples requested will be invoiced to you on dispatch and will be credited in full provided they are returned to us unused within thirty days of delivery otherwise the price, including any applicable post & packing and VAT becomes immediately payable.

Rental

Any garment supplied under a rental or hire purchase agreement will be covered by separate Terms & Conditions.

In an effort to continually improve our service to our customers, telephone calls may be recorded for training purposes.

This contract shall be governed by the laws of England and both parties shall submit to the non-exclusive jurisdiction of the English Courts.