

top quality cotton comfort
bold check co-ordinates - with teflon



W31
White



Industrially
launderable



SH714
Black &
White



40°

Unisex Chefs Jacket
W31

- 275gsm 100% Pre-shrunk Satin Cotton • Long sleeved
- Mandarin collar
- Rubber buttons
- Cuff vents
- Unisex fastening
- Industrially launderable
- Sizes: 84 - 140cm (33 - 55ins)
- Colour:** White

For chefs hats
see page 135

Unisex Chefs Trousers
SH714 / SH714U

- Big check print • 210gsm 100% Cotton with Teflon • Elasticated drawstring waist
- Two pockets • 40° wash
- Inside leg: Hemmed 77cm (30ins) Unhemmed 86cm (34ins)
- Waist sizes: S fits up to 72cm (28ins) M fits up to 80cm (31 1/2ins) L fits up to 88cm (34 1/2ins) XL fits up to 96cm (38ins) XXL fits up to 104cm (41ins)
- Colours:** Red & White / Kelly Green & White / Royal & White / Black & White

SH737
Red & White
SH736
Red & White



Kerchief
SH737

- Big check print
- 100% Cotton with Teflon
- 40° wash
- Colours:** Red & White / Kelly Green & White / Royal & White / Black & White

Bib Apron
SH736

- Big check print
- 100% Cotton with Teflon
- Matching tape halter & ties
- 40° wash
- Length: 92cm (36ins)
- Colours:** Red & White / Kelly Green & White / Royal & White / Black & White



SH734
Royal &
White



Long Waist Apron
SH734

- Big check print
- 100% Cotton with Teflon
- Matching tape ties
- 40° wash
- Length: 71cm (28ins)
- Colours:** Red & White / Kelly Green & White / Royal & White / Black & White

Kerchief
CZ108

- 67% Polyester/33% Cotton
- 50° wash
- Colours:** Red / Azure



Red & White

SH714



40°

Kelly Green & White

Royal & White

Black & White

A comprehensive range of chefswear including luxury pre-shrunk pure Cotton jackets and cool, lightweight Polyester/Cotton options. The chefs trouser range comprises both traditional checks and fun bright prints co-ordinating with coloured chefs jackets.

Black & white contemporary prints and co-ordinating plains offer stylish simplicity.

The Teflon finish on the bold check range of chefs trousers, co-ordinating aprons and accessories provides stain resistance allowing you to stay smart longer.

Many items are suitable for the industrial laundry - look for the flags.

Co-ordinating hats, aprons & kerchiefs are also available.

For more Aprons see pages 142 - 159

For Chefs Clogs see pages 276 - 277

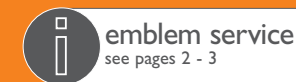
For Size Charts see pages 282 - 283

chefswear

pure cotton jackets & trousers 124 - 129

polyester/cotton jackets & trousers 130 - 133

co-ordinating hats 134 - 135



call 0845 155 2288 or visit www.alexandra.co.uk

© 2009 Alexandra plc Not to be copied without permission

striking black & white
durable co-ordinates with & without teflon finish

CZ20
Cow Print
CZ24
Black
CZ15
White



All items



CZ16
Cow Print



CZ21
Cow Print
CZ24
Black
CZ15
White

CADENZA

Consultant Designer Bruce Oldfield

Kerchief

CZ24

- 100% Cotton
- 40° wash
- Colour: Black

Unisex Chefs Jacket

CZ15

- 275gsm 100% Satin Cotton
- Long sleeved
- Mandarin collar
- Two-tone plastic buttons
- Roll back button cuffs
- Unisex fastening
- Industrially launderable
- Chest sizes:
- XXS to fit 84cm (33ins)
- XS to fit 88cm (34 1/2ins)
- S to fit 96cm (38ins)
- M to fit 108cm (42 1/2ins)
- L to fit 116cm (45 1/2ins)
- XL to fit 124cm (49ins)
- XXL to fit 132cm (52ins)
- Colour: White

CZ89
Black



CZ17
White /
Cow Print

SH741
Black &
White



SH742
Black &
White



CZ22
Black

CZ24
Black

SH728
White



NEW

NU965
Black



SH764
Black



great
value

SH744
Black & White

SH740
Black & White

SH725
White



SH739
Black &
White



Wrap-over Velcro fastening on SH728 & SH725

Unisex Chefs Trousers

- CZ16**
- Cow print
 - 200gsm 100% Cotton with Teflon
 - Elasticated drawstring waist
 - Two hip pockets
 - 40° wash
 - Inside leg: 77cm (30 1/2ins) hemmed
 - Waist sizes:
 - S fits up to 72cm (28ins)
 - M fits up to 80cm (31 1/2ins)
 - L fits up to 88cm (34 1/2ins)
 - XL fits up to 96cm (38ins)

Long Waist Apron

- CZ17**
- Cow print trim
 - 100% Cotton Drill
 - White tape ties • 60° wash
 - Length: 65cm (25 1/2ins)
- Bib Apron**
- SH741**
- Black & white stripe print
 - 100% Cotton with Teflon
 - Black tape halter & ties
 - 40° wash
 - Length: 92cm (36ins)

Long Waist Apron

- SH742**
- Black & white stripe print
 - 100% Cotton with Teflon
 - Black tape ties
 - 40° wash
 - Length: 71cm (28ins)
- Kerchief**
- SH740**
- Black & white stripe print
 - 100% Pre-shrunk Cotton with Teflon
 - 40° wash

Unisex Carvery Jacket

- SH728**
- 275gsm 100% Cotton with Teflon
 - Long sleeved • Mandarin collar
 - Wrap-over Velcro fastening
 - Fabric covered buttons
 - Cuff vents • 60° wash
 - Chest sizes:
 - S to fit 96cm (38ins)
 - M to fit 104cm (41ins)
 - L to fit 112cm (44ins)
 - XL to fit 120cm (47ins)
 - XXL to fit 128cm (50ins)
 - Colour: White

Unisex Chefs Trousers

- NU965U**
- 195gsm 67% Polyester/33% Cotton
 - Elasticated drawstring waist
 - Two pockets
 - 60° wash
 - Inside leg: 86cm (34ins) unhemmed
 - Waist sizes:
 - S fits up to 72cm (28ins)
 - M fits up to 80cm (31 1/2ins)
 - L fits up to 88cm (34 1/2ins)
 - XL fits up to 96cm (38ins)
 - Colour: Black

Unisex Chefs Trousers

- SH764 / SH764U**
- 210gsm 100% Cotton with Teflon
 - Elasticated drawstring waist
 - Two pockets
 - 40° wash
 - Inside leg: Hemmed 77cm (30ins) Unhemmed 86cm (34ins)
 - Waist sizes:
 - S fits up to 72cm (28ins)
 - M fits up to 80cm (31 1/2ins)
 - L fits up to 88cm (34 1/2ins)
 - XL fits up to 96cm (38ins)
 - Colour: Black

Unisex Carvery Jacket

- SH725**
- 275gsm 100% Cotton with Teflon
 - Short sleeved • Mandarin collar
 - Fabric covered buttons
 - Wrap-over Velcro fastening
 - 40° wash
 - Chest sizes:
 - S to fit 96cm (38ins)
 - M to fit 104cm (41ins)
 - L to fit 112cm (44ins)
 - XL to fit 120cm (47ins)
 - XXL to fit 128cm (50ins)
 - Colour: White

Unisex Chefs Trousers

- SH739**
- Black & white stripe print
 - 195gsm 100% Cotton with Teflon
 - Elasticated drawstring waist
 - Two pockets
 - 40° wash
 - Inside leg: 77cm (30ins) hemmed
 - Waist sizes:
 - S fits up to 72cm (28ins)
 - M fits up to 80cm (31 1/2ins)
 - L fits up to 88cm (34 1/2ins)
 - XL fits up to 96cm (38ins)

long lasting classics

traditional whites & checks

NG24
Blue & White
W34
White
W131
White



Industrially
launderable



Unisex



Mens and womens chefs trousers
- cotton & poly / cotton options



Industrially
launderable

NMI62* / W32* / NF174 / W130
Blue & White (* No elastication)



Industrially
launderable

NMI62 / NF174
Black & White



W332 / W330
Blue & White



W332 / W330
Black & White

Unisex Chefs Jacket W131

- 270gsm 100% Pre-shrunk Satin Cotton
- Long sleeved
- Mandarin collar
- Detachable plastic buttons (black & white sets supplied)
- Turn back cuffs
- Unisex fastening
- Industrially launderable
- Sizes: 84 - 140cm (33 - 55ins)
- Colour:** White

Detachable Plastic Buttons SH746

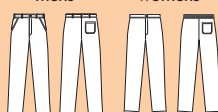
- Supplied in packs of 10
- For W131, NG22 & W151 chefs jackets
- Colours:** Navy / Royal / Black / Red / White / Kelly Green



For chefs hats see pages 134 - 135
For footwear see pages 276 - 281

Chefs Trousers

mens womens



Elasticated back

Unisex Chefs Jacket W31

- 275gsm 100% Pre-shrunk Satin Cotton
- Long sleeved
- Mandarin collar
- Rubber buttons
- Cuff vents
- Unisex fastening
- Industrially launderable
- Sizes: 84 - 140cm (33 - 55ins)
- Colour:** White

Kerchief W34

- 65% Polyester/35% Cotton
- Colours:** White / Royal

Mens Chefs Trousers NMI62R / NMI62T

- 67% Polyester/33% Cotton
- W32R / W32T**
100% Pre-shrunk Cotton
- Woven check
- Two hip pockets & one back pocket
- Industrially launderable
- Inside leg:
 - Regular 78cm (30 1/2ins) hemmed
 - Tall 84cm (33ins) hemmed
- Sizes: 68 - 132cm (27 - 52ins)
- Colours:** Blue & white / Black & white*
- *NMI62 only

Womens Chefs Trousers NF174 67% Polyester/33% Cotton W130 100% Pre-shrunk Cotton

- Woven check
- One back pocket
- Elasticated back
- Industrially launderable
- Inside leg: 82cm (32ins) hemmed
- Sizes: 8 - 26
- Colours:** Blue & white / Black & white*
- *NF174 only

Mens Chefs Trousers W332R / W332T

- Woven Houndstooth Check
- 100% Pre-shrunk Cotton
- Two hip pockets, one back pocket
- 60° wash
- Inside leg: Regular 78cm (30 1/2ins) hemmed
- Tall 84cm (33ins) hemmed
- Sizes: 68 - 132cm (27 - 52ins)
- Colours:** Blue & white / Black & white

Womens Chefs Trousers W330

- Woven Houndstooth Check
- 100% Pre-shrunk Cotton
- One back pocket
- Elasticated back
- 60° wash
- Inside leg: 82cm (32ins) hemmed
- Sizes: 8 - 26
- Colours:** Blue & white / Black & white

W31
White
W34
White



Industrially
launderable



Unisex



vibrant & cool!
lightweight poly / cotton co-ordinates



chefs jacket in 5 non-fade colours



CZ89
Red
Chefs jacket
60°
All other items
Industrially
launderable



CZ109
Lime

CZ97 / CZ99
Multi-check print

CZ109
Red

CZ98
Fruit print

CZ109
Azure

CZ95 / CZ96
Fruit print

CZ109
Bright Yellow

NG29
Co-ordinating Black apron - see page 144

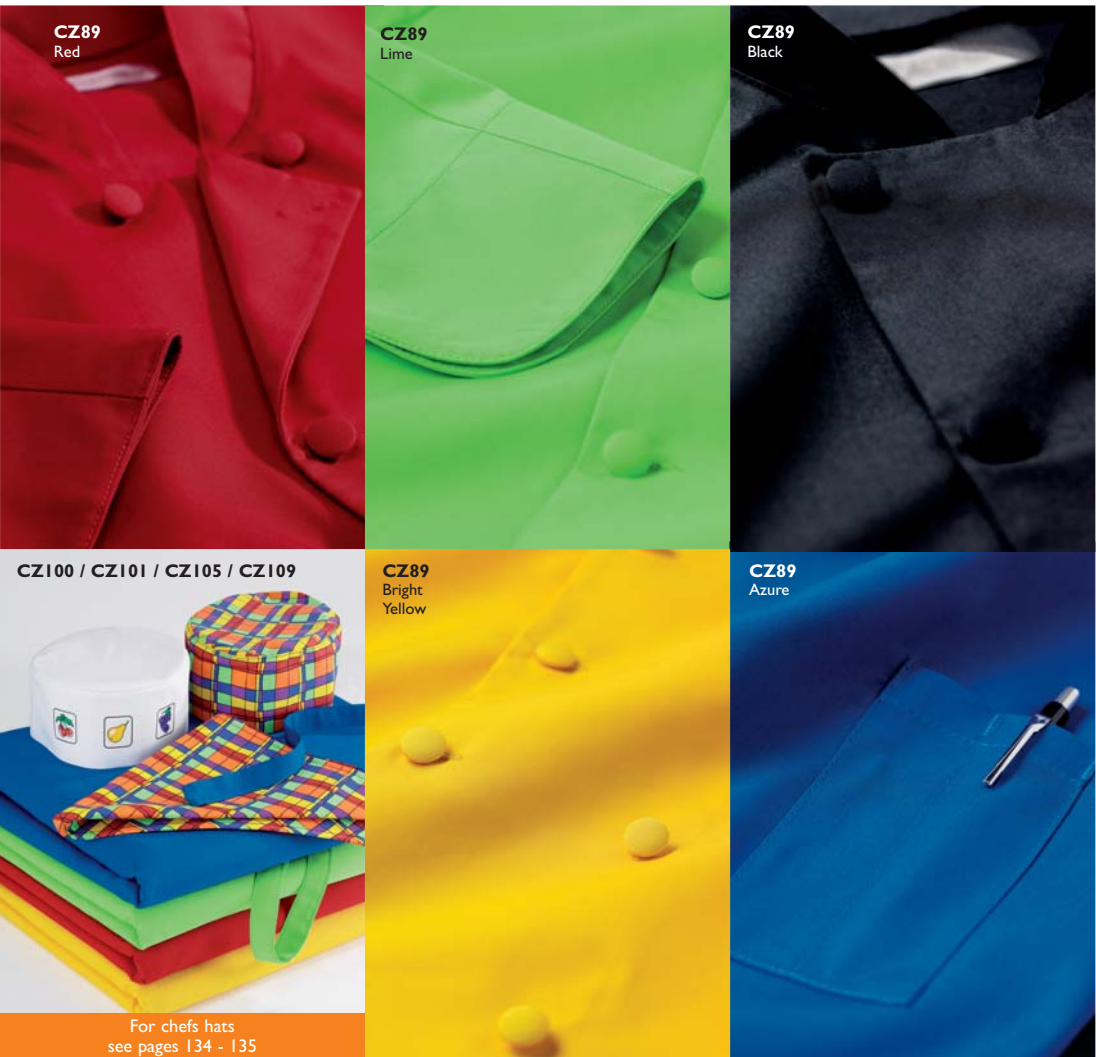
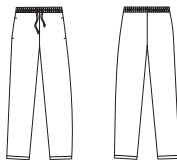
Unisex Chefs Jacket CZ89

- 210gsm 67% Polyester/33% Cotton
- Long sleeved
- Mandarin collar
- Fabric covered buttons
- Turn back cuffs
- Pen pocket on sleeve
- Unisex fastening
- 60° wash
- Sizes: XS - XXL
- Colours: Red / Lime / Black / Bright Yellow / Azure



Unisex Chefs Trousers CZ98

- Fruit print
- **CZ99** Multi-check print
- 67% Polyester/33% Cotton
- Elasticated drawstring waist
- Two pockets
- Industrially launderable
- Inside leg: 77cm (30ins) hemmed
- Waist sizes:
 - S fits up to 72cm (28ins)
 - M fits up to 80cm (31 1/2ins)
 - L fits up to 88cm (34 1/2ins)
 - XL fits up to 96cm (38ins)



CZ89
Red

CZ89
Lime

CZ89
Black

CZ100 / CZ101 / CZ105 / CZ109

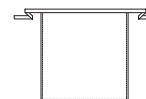
CZ89
Bright Yellow

CZ89
Azure

For chefs hats
see pages 134 - 135

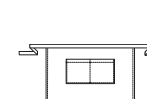
Long Waist Apron CZ109

- 67% Polyester/33% Cotton
- Self-fabric ties
- Industrially launderable
- Length: 71cm (28ins)
- Colours: Azure / Lime / Red / Bright Yellow



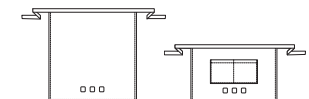
Short Waist Apron CZ97

- Multi-check print
- 67% Polyester/33% Cotton
- 2-part pocket
- Self-fabric ties
- Industrially launderable
- Length: 46cm (18ins)



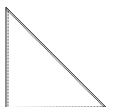
Waist Apron CZ95 Long CZ96 Short

- Fruit logo
- 67% Polyester/33% Cotton
- 2-part pocket on CZ96
- Self-fabric ties • Industrially launderable
- Lengths:
 - CZ95 71cm (28ins)
 - CZ96 46cm (18ins)



Kerchief CZ105

- Multi-check print
- 67% Polyester/33% Cotton
- Industrially launderable



cool classics

polyester / cotton easy care essentials

W151
White

LIGHT
WEIGHT



Industrially
laundryable

great
value

Unisex Chefs Jacket NG22

- 275gsm 50% Cotton/ 50% Polyester
- Contrast piping
- Long sleeved
- Mandarin collar
- Detachable navy buttons supplied • Turn back cuffs
- Pen pocket on sleeve
- Unisex fastening
- Industrially laundryable
- Sizes: XS - XXL

Detachable Plastic Buttons SH746

- Supplied in packs of 10
- For W131, NG22 & W151 chefs jackets
- Colours: Navy / Royal / Black / Red / White / Kelly Green
- (Pictured on page 128)



All jackets



Unisex

NG22
White /
Navy



Industrially
laundryable

W470
White
W34
White
NG21
White



All trousers



Industrially
laundryable



NF174
Blue & White

NMI62
Blue & White

Unisex Carvery Jacket W151

- 210gsm 65% Polyester/ 35% Cotton
- Long sleeved
- Mandarin collar
- Detachable plastic buttons (black & white sets supplied)
- Cuff vents
- Unisex fastening
- Industrially laundryable
- Sizes: 84 - 140cm (33 - 55ins)

Colour: White

Womens Chefs Trousers NF174

- Woven Check
- 190gsm 67% Polyester/33% Cotton
- One back pocket
- Elasticated back
- Industrially laundryable
- Inside leg: 82cm (32ins) hemmed
- Sizes: 8 - 26

Colours: Blue & White check / Black & White check

Unisex Chefs Jacket NG21

- 275gsm 50% Cotton/ 50% Polyester
- Long sleeved
- Mandarin collar
- Asymmetrical button front
- Fabric covered buttons
- Turn back cuffs
- Pen pocket on sleeve
- Unisex fastening
- 60° wash
- Sizes: XS - XXL

Colour: White

Mens Chefs Trousers NMI62R / NMI62T

- Woven Check
- 190gsm 67% Polyester/33% Cotton
- Two hip pockets & one back pocket
- Industrially laundryable
- Inside leg:
Regular 78cm (30 1/2ins) hemmed
Tall 84cm (33ins) hemmed
- Sizes: 68 - 132cm (27 - 52ins)

Colours: Blue & White check / Black & White check

Unisex Chefs Jacket NU952

- 275gsm 50% Cotton/ 50% Polyester
- Long sleeved
- Mandarin collar
- Thermal plastic buttons
- Turn back cuffs
- Pen pocket on sleeve
- D Piece in neck
- Unisex fastening
- Industrially laundryable
- Sizes: XS - XXL

Colour: White

Unisex Chefs Jacket NG23

- 275gsm 50% Cotton/ 50% Polyester
- Long sleeved
- Mandarin collar
- Fabric covered buttons
- Turn back cuffs
- Pen pocket on sleeve
- Unisex fastening
- 60° wash
- Sizes: XS - XXL

Colour: White

Unisex Chefs Jacket NG20

- 275gsm 50% Cotton/ 50% Polyester
- Long sleeved
- Mandarin collar
- Asymmetrical concealed stud front
- Turn back cuffs
- Pen pocket on sleeve
- Industrially laundryable
- Sizes: XS - XXL

Colour: White



Unisex Chefs Jacket NU964 **NEW**

- 275gsm 50% Cotton/ 50% Polyester
- Long sleeved
- Mandarin collar
- Detachable plastic buttons
- D Piece in neck
- Back yoke
- Unisex fastening
- Industrially laundryable
- Sizes: XS - XXXL

Colour: White

For chefs hats see
pages 134 - 135

CZ22
Black
NU952
White



Industrially
laundryable

NG20
White



Industrially
laundryable



NG23
White



NEW

Wickable
technology

NU964
White



Industrially
laundryable

As seen on Hell's Kitchen 3

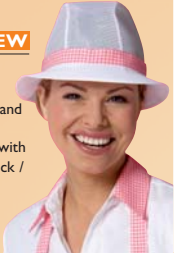
chef / bakery / kitchen hats

all one size - unless otherwise stated

comfort / value / co-ordination

Trilby Hat NU963 **NEW**

- 100% Polyester
- White hat with sewn-on checked band
- Sizes: S - XL
- Colours: White hat with Pink check / Blue check / Navy check hatband



Trilby Hat G81

- 100% Polyester
- Sizes: S - XL
- Colours: White / Green / Navy / Red



Trilby Hat G110

- 100% Polyester with Teflon
- Sizes: S - XL
- Colour: White



Coverall Hat W246

- 100% Nylon crown
- 65% Polyester/ 35% Cotton peak
- Colour: White



Coverall Hat W434

- 100% Nylon crown
- 65% Polyester/ 35% Cotton peak
- Colours: Aqua / Blade Blue / Kelly Green / Pale Blue / Red / Royal



Coverall Hat W164

- 65% Polyester/ 35% Cotton
- Colours: White / Royal / Petrol Blue



Coverall Hat W126

- 65% Polyester/ 35% Cotton
- Colour: White



Coverall Hat W124

- 100% Cotton
- Colour: White



Coverall Hat W125

- 100% Cotton Drill
- Net crown
- Colour: White



Cap W84

- 65% Polyester/ 35% Cotton
- Sizes: S - L
- Colours: Navy / Royal / White



Cap W248

- 100% Cotton Drill
- Net crown
- Back elastication
- Colours: White / Navy



Cap W247

- 65% Polyester/ 35% Cotton
- Back elastication
- Colour: White



Cap W39

- 100% Pre-shrunk Cotton
- Sizes: S - L
- Colours: White / Navy



Bakers Hat W85

- 100% Cotton Drill
- Sizes: S - L
- Colour: White



Hat NW51

- Woven Stripe
- 67% Polyester/ 33% Cotton
- Plain crown
- Colours: Lilac & White / Aqua & White / Navy & White / Pale Blue & White



Skull Cap W470

- 100% Pre-shrunk Cotton
- Sizes: S - L
- Colour: White



Skull Cap SH733

- Big check print
- 100% Pre-shrunk Cotton
- Sizes: S - L
- Colours: Royal & White / Black & White / Kelly Green & White / Red & White



Skull Cap CZ22

- Plain Black
- 100% Satin Cotton Drill
- Sizes: S - L



Skull Cap SH744

- Black & White stripe print
- 100% Pre-shrunk Cotton
- Sizes: S - L



Skull Cap NG24

- Small woven check
- 100% Cotton
- Sizes: S - L
- Colour: Blue & White



Skull Cap CZ106

- 65% Polyester/ 35% Cotton
- Sizes: S - L
- Colours: Azure / Red / Royal



NEW
colour

Bandanna CZ107

- 65% Polyester/ 35% Cotton
- Colours: Azure / Red



Skull Cap CZ100

- Fruit logo
- 67% Polyester/ 33% Cotton
- Sizes: S - L



Skull Cap CZ101

- Multi-check print
- 67% Polyester/ 33% Cotton
- Sizes: S - L



Beard Snood W377

- 90% Nylon/ 10% Elastomeric
- Sold in packs of 20
- Colours: Brown / Pale Blue



Unisex Hairnet W376

- 90% Nylon/ 10% Elastomeric
- Sold in packs of 50
- Colours: White / Black / Sky Blue / Medium Brown / Dark Brown / Green / Lilac



Bandanna CZ20

- Cow print
- 100% Cotton with Teflon
- Colours: Plain Black / 100% Cotton



Skull Cap CZ21

- Cow print
- 100% Cotton with Teflon
- Colours: Plain White / 100% Satin Cotton Drill



Bandanna CZ26

- Plain Black
- 100% Cotton

Skull Cap CZ23

- Plain White
- 100% Satin Cotton Drill

Bandanna CZ27

- Plain White
- 100% Satin Cotton Drill

Straw Boater D213

- Hatbands supplied separately
- Sizes: S - XL



Hatband SH738

- Big check print
- 100% Cotton
- Sizes: S - XL
- Colours: Kelly Green & White / Black & White

Hatband D219

- 100% Nylon
- Sizes: S - XL
- Colours: Red / Bottle Green / Kelly Green / Navy / Blue / Royal / Yellow

Chefs Hat W33

- 100% Cotton
- Sizes: S - L
- Colour: White



Chefs Hat WP2

- Paper
- Adjustable size
- Colour: White



garment care

call for specialist advice

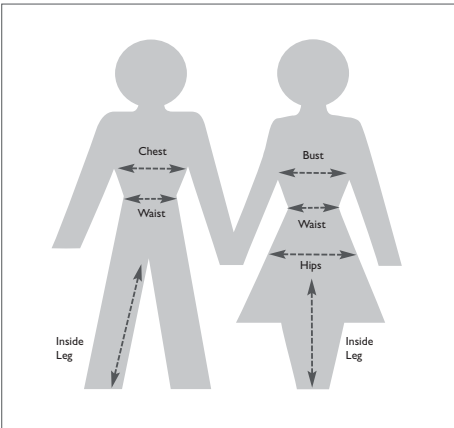
how to measure

A good fit is vital for a professional look and wearer comfort. Please follow these guidelines when choosing your garments.

- Take body measurements and do not measure over your clothing.
- Check whether the garment you are measuring for is sized in inches or centimetres. Use the same unit of measurement when measuring and placing your order.
- Ask someone else to measure you for greater accuracy.
- Take the measurement from the fullest part of your body.
- Do not pull the tape too tight.
- Choose the length of your item of clothing from an existing garment in your wardrobe.
- Always order the garment to accommodate the largest body measurement.

where to measure

- Bust or Chest** Measure over the fullest part of the chest under the arms and straight across the back
- Waist** Measure around the natural waistline - with the tape snug but not tight
- Hips/Seat** Measure the fullest part of the body, generally 20cm below the waist
- Inside leg** Measure from crotch to floor. What is your normal inside leg measurement?



garment care

Please read the care instructions provided on garment labels before washing. Follow these instructions carefully to maintain the good appearance and life of the garment.

- Wash dark and light colours separately. Colour can rub off onto other garments if washes are mixed.
- Keep garments with different fibre content separate when washing.
- Wash garments frequently to prolong their life - avoiding heavy soiling.
- Follow tumble drying instructions carefully as per the symbol on the care label.
- For best results 100% Cotton garments should be pressed whilst slightly damp.
- Reshape knitted garments whilst damp, and dry flat.
- Do not press lightweight garments with steam.
- Do not press suiting on the outside, press inside out or use a cloth and steam press lightly.

care symbols

washing		ironing	
	Do not wash		Do not iron
	Hand wash		Cool iron 110°C/230°F
	Machine wash, max temp 40°C/104°F Cotton cycle		Warm iron 150°C/302°F
	Machine wash, max temp 40°C/104°F Synthetic cycle, reduced mechanical agitation		Hot iron 200°C/392°F
drying		dry cleaning	
	Do not tumble dry		Do not dry clean
	Tumble dry low heat		Dry clean in any solvent except Trichlorethylene
	Tumble dry high heat		
others			
	Do not bleach		Chlorine bleach may be used direct
industrially launderable			
When you see this symbol in the catalogue the garment is suitable for industrial laundry. This process washes at temperatures exceeding 70°C and uses a tunnel finish drying process in excess of 150°C in a commercial environment.			
mens and womens washable suiting jackets - pages 4 - 13			
Machine wash at 40° / Do not bleach / Cool iron with cloth placed between iron and garment / Do not tumble dry / Immediately after wash remove the garment and place on the hanger provided to dry / Suitable for dry cleaning			

size charts

call for sizes outside the standard range

womens suiting: sized in dress sizes					
Order Size	8	10	12	14	16
Bust	cm 79 - 83 ins 31 - 32½	84 - 87 33 - 34	88 - 91 34½ - 36	92 - 96 36 - 38	97 - 101 38 - 40
Waist	cm 61 - 65 ins 24 - 25½	66 - 69 26 - 27	70 - 73 27½ - 29	74 - 78 29 - 30½	79 - 83 31 - 32½
Hips	cm 84 - 88 ins 33 - 34½	89 - 92 35 - 36	93 - 96 36½ - 38	97 - 101 38 - 40	102 - 106 40 - 42
Order Size	18	20	22	24	26
Bust	cm 102 - 106 ins 40 - 42	107 - 111 42 - 43½	112 - 117 44 - 46	118 - 123 46½ - 48½	124 - 129 49 - 51
Waist	cm 84 - 88 ins 33 - 34½	89 - 93 35 - 36½	94 - 99 37 - 39	100 - 105 39½ - 41	106 - 111 42 - 43½
Hips	cm 107 - 111 ins 42 - 43½	112 - 117 44 - 46	118 - 123 46½ - 48½	124 - 129 49 - 51	130 - 135 51 - 53

womens garments (excl. suiting): sized in dress sizes											
Order Size	8	10	12	14	16	18	20	22	24	26	28
Bust	cm 79 ins 31	84 33	89 35	94 37	99 39	104 41	109 43	114 45	119 47	124 49	130 51
Waist	cm 59 ins 23	64 25	69 27	74 29	79 31	84 33	89 35	94 37	99 39	104 41	109 43
Hips	cm 84 ins 33	89 35	94 37	99 39	104 41	109 43	114 45	119 47	124 49	129 51	134 53

womens coats, tunics & dresses: sized in centimetres													
Order Size	80	84	88	92	96	100	104	108	112	120	128	136	
Bust	cm 80 ins 31½	84 33	88 34½	92 36	96 38	100 39½	104 41	108 42½	112 44	120 47½	128 50½	136 53½	
Waist	cm 61 ins 24	65 25½	69 27	73 28½	77 30	81 32	85 33½	89 35	93 36½	101 39½	109 43	117 46	
Hips	cm 86 ins 34	90 35½	94 37	98 38½	102 40	106 42	110 43½	114 45	118 46½	126 49½	134 53	142 56	

dress length information:
 ST312, D312, HP297, ST297, D308, D152, D314, D337
 Short - 100cm (39½/zins) to suit height of 5'2" & under
 Regular - 106cm (42ins) to suit height of 5'3" - 5'6"
 Tall - 112cm (44ins) to suit height of 5'7" - 5'9"
 Unhemmed - 122.5cm (48ins) hem to a length of your choice

tabards				
Order Size	S	M	L	XL
Bust	cm 80 - 88 ins 31½ - 34½	92 - 100 36 - 39½	104 - 112 41 - 44	116 - 124 45½ - 49

mens suiting & casual trousers: sized in inches							
Order Size	28	30	32	34	36	38	40
Chest	ins -	-	32	34	36	38	40
Waist	ins 28	30	32	34	36	38	40
cm	71	76	81	86	91	96	102
Order Size	42	44	46	48	50	52	54
Chest	ins 42	44	46	48	50	-	-
cm	107	112	117	122	127	-	-
Waist	ins 42	44	46	48	50	52	54
cm	107	112	117	122	127	132	137

mens shirts: sized in inches													
Collar	ins 14	14½	15	15½	16	16½	17	17½	18	18½	19	19½	
cm	35.5	37	38	39	41	42	43	44	46	47	48	49	

mens coats, tunics, trousers & workwear also unisex chefs jackets - W31, W151 & W131: sized in centimetres									
Order Size	68	72	76	80	84	88	92	96	
Chest/	cm 68	72	76	80	84	88	92	96	
Waist	ins 27	28½	30	31½	33	34½	36	38	
Order Size	100	104	108	112	116	124	132	140	
Chest/	cm 100	104	108	112	116	124	132	140	
Waist	ins 39½	41	42½	44	45½	49	52	55	

unisex shirts, outerwear, chefswear & scrub suits						
Order Size	XS	S	M	L	XL	XXL
Dress Size	6 - 8	10 - 12	14 - 16	18 - 20	22 - 24	26 - 28
Chest/	cm 76 - 81	86 - 91	96 - 102	107 - 112	117 - 122	127 - 132
Bust	ins 30 - 32	34 - 36	38 - 40	42 - 44	46 - 48	50 - 52
Waist	cm 61 - 66	71 - 76	81 - 86	91 - 96	102 - 107	112 - 117
ins	24 - 26	28 - 30	32 - 34	36 - 38	40 - 42	44 - 46
Collar	cm 34 - 35	36 - 37	38 - 39	40 - 41	43 - 44	45 - 46
ins	13 - 13½	14 - 14½	15 - 15½	16 - 16½	17 - 17½	18 - 18½

boater & hatbands D213 / D219 / SH738				
Order Size	S	M	L	XL
ins	6½/8	6¾/8	7¼/8	7¾/8

footwear All styles excluding those listed below													
UK	3	4	5	6	7	8	9	10	11	12	13		
Euro	36	37	38	39	41	42	43	44	46	47	48		

footwear BB98 / C10 / C11 / RP266															
UK	2	3	4	5	5½	6	7	8	8½	9	10	11	12	12½	13
Euro	34	35	36	37	38	39	40	41	42	43	44	45	46	47	48

footwear FW112 / FW129 / FW148 / FW504							
UK	6	7	8	9	10	11	12
Euro	40	41	42	43	44	45	46

footwear GT581									
UK	5	6	7	8	9	10	11	12	13
Euro	37.5	38.5	40	42	43	44	45	46.5	48.5

footwear SX174											
UK	3	4	5	6	7	8	9	10	11	12	
Euro	36	37	38	40	41	42	43	44	46	47	

notes:

- All measurements are BODY measurements
- Please see product pages for length information
- Sizes outside the standard catalogue range may be available at a surcharge, please call for details 0845 155 2288
- When ordering maternity wear, please order your usual size as the garment construction will accommodate your change in shape during pregnancy
- For casualwear/leisurewear see details on the product pages

terms & conditions

General

These terms apply to all sales by Alexandra to the exclusion of any other terms unless otherwise agreed in writing.

Alexandra reserves the right to make changes to the items shown in this catalogue and to remove selected styles.

Delivery

Stock items ordered by 2pm will normally be dispatched on the day of receipt of order using our standard two working day delivery service. Anticipated delivery dates for non-catalogue or personalised garments may be confirmed at the time of ordering. Unless agreed in writing time is not of the essence.

Alexandra reserves the right to deliver the goods in reasonable instalments, in which case you shall accept and pay for the goods in reasonable instalments. Each instalment is to be treated as a separate contract.

Any claim for non-delivery of or damage to the goods in transit should be made within seven days of the date of the invoice for them. Our liability in respect of any such claim is limited at our option to replacement of the goods or refund of the price and does not extend to any indirect or consequential loss.

Price

The price of the goods will be the price ruling at the date of dispatch. All prices quoted exclude post & packing and VAT.

Any applicable post & packing and VAT is payable by you in addition to the contract price.

Orders up to a value of £150 plus VAT will incur a post & packing charge of £4.95 plus VAT per order for deliveries within most areas of mainland UK. A next day service, providing delivery by 5pm the next working day (Mon-Fri only), is available within most areas of the UK at a cost of £5.45 plus VAT per package, inclusive of any post & packing charge, up to a maximum weight of 25kg per package. Orders must be received by 2pm. In areas affected by a congestion charge a surcharge of 50p plus VAT per order may be added. In the event that the carrier is unable to deliver to you and a second delivery journey is required, or if the second attempted delivery is unsuccessful, in which case the goods will be returned to Alexandra, additional carriage charges incurred may be charged to you. Alexandra will not be liable for any consequential loss caused by failure of the carrier to deliver.

Any other additional services such as embroidery or other personalisation of garments, alteration to garments, manpacking etc. will incur an additional charge. Prices for these services will be confirmed at the time of ordering.

Payment

Invoices will be issued on the day of dispatch of the goods and must be paid within thirty days of invoice date, subject to status.

If you fail to pay us in full on the due date:

1. We may suspend or cancel future deliveries;
 2. We may cancel any discount offered to you;
 3. You must pay us interest at the rate equivalent to that set for the purposes of Section 6 of the Late Payment of Commercial Debts (Interest) Act 1998;
- a) calculated (on a daily basis) from the date of our invoice until payment;
 - b) compounded on the first day of each calendar month;
 - c) before & after any judgement (unless the court orders otherwise).

If you have not paid Alexandra all amounts due on an invoice and 45 days have passed since the due date for payment then Alexandra has the right to charge you an administrative fee.

Where copy invoices are requested faxed copies will be provided free of charge but there will be a charge of £1 plus VAT for copies required to be sent by post.

You are to indemnify Alexandra in full and hold Alexandra harmless from all expenses and liabilities Alexandra may incur (directly or indirectly and including finance costs and legal costs on a full indemnity basis) following any breach by you of any of your obligations under these terms. You are not entitled to set off any debt or claim against other amounts owing to us.

Risk & Ownership

The risk in the goods passes to you when the goods are delivered to the delivery address. Ownership of the goods remains with Alexandra until payment has been received in full for the goods and any other garments for which payment is also due.

Your Data

From time to time we may make our mailing file available to carefully selected companies whose products may be of interest to you. If you do not want us to pass on your details, please write to our customer care department at our Central Sales Office, email us at customercare@alexandra.co.uk or phone 0845 245 5020.

Insolvency

If (a) you make any voluntary arrangement with your creditors or become bankrupt or become subject to an administration order, or go into liquidation; or (b) you cease, or threaten to cease, to carry on business; or (c) Alexandra reasonably believes that any of the above events is about to occur and notifies you accordingly then you shall cease at once to use any goods not then paid for and shall on demand return any of them remaining in your possession. On making such a demand, we are entitled, without incurring any liability to you, to enter your premises and remove and repossess such of our goods as are to be found there, and also to cancel any contract with you.

Force Majeure

Where we are unable to perform due to any circumstances beyond our control we may suspend performance while those circumstances subsist and any agreed date or period for delivery shall be regarded as extended accordingly. If any period of suspension of deliveries lasts for more than three months, either party may cancel the contract by written notice without penalty.

Returns Policy

If any catalogue garments are not required for any reason we will be happy to replace them or to refund their value provided that; (a) they are returned to us carriage paid, unused (other than for the purpose of trying on the garment), within thirty days of delivery; (b) our invoice relating to the relevant goods has been paid by the due date; and (c) a written note is enclosed quoting the invoice number and stating the reason for the garments being returned. Garments which have been used but are returned within seven days under the terms of the Consumer Protection (Distance Selling) Regulations 2000, will also be refunded along a handling fee may be deducted from the refund. In the case of return of ten or more garments a handling charge relating to the administration costs incurred may be applied by Alexandra. Goods returned are done so at your risk and you are advised to use a service which provides a guarantee of delivery. This returns policy does not apply to non-catalogue styles, altered or personalised garments.

Cancellation

If an order for a non-catalogue style, personalised or altered garment is cancelled for any reason you will be charged for any garment, labour or fabric costs that have been incurred in processing the order up to the time of cancellation.

Warranties & Liability

Alexandra warrants that the goods will correspond with their specification and will be free from defects in material and workmanship. In addition, garments constructed from speciality workwear fabric will be guaranteed for a period of twenty four months from purchase. Both of these warranties are subject to the following conditions:

- (a) Alexandra shall not be liable; (i) in respect of any defect arising otherwise than from fair wear and tear, or arising from wilful damage, negligence, failure to follow care instructions, abnormal working conditions, misuse or alteration; (ii) if the total price for the goods has not been paid by the due date; (iii) if the defect arises from any drawing, design or specification supplied by the customer.
- (b) Where goods are faulty, Alexandra shall replace the goods free of charge, rectify the fault, or refund the price of the goods, and Alexandra shall have no further liability. For any sales covered by the Consumer Protection (Distance Selling) Regulations 2000 the customer has the right to request a refund.
- (c) Alexandra shall not be liable for any loss or damage whether direct or consequential or otherwise but in any event Alexandra's liability (if any) shall be limited to the price of the goods.
- (d) Nothing in these terms affects Alexandra's liability for death or personal injury resulting from Alexandra's negligence.
- (e) Nothing in these terms affects your statutory rights.

Samples

Any samples requested will be invoiced to you on dispatch and will be credited in full provided they are returned to us unused within thirty days of delivery otherwise the price, including any applicable post & packing and VAT becomes immediately payable.

Rental

Any garment supplied under a rental or hire purchase agreement will be covered by separate Terms & Conditions.

In an effort to continually improve our service to our customers, telephone calls may be recorded for training purposes.

This contract shall be governed by the laws of England and both parties shall submit to the non-exclusive jurisdiction of the English Courts.